



SCI

INTEGRATED SCREW COMPRESSOR FOR AIR

Shaft seal

A double rim ring in Viton with metallic framework to resist to pressure forms the shaft lubricated seal. The bushing, keyed on the shaft has a special machining with an our exclusive technology to grant a perfect sealing and an exceptional life.

Painting

All T.M.C. screw compressors have a modern, environmentally friendly, protective paint. The surface finish protects the castings effectively against corrosion even after many years of operation.

Air filter

The quality of the filters used in the Integrated series "SCI" ensures the performance and increases the reliability of the compressor unit.

Casing

Modern numerical control machining centers, constantly monitored by means of continuous testing technical specialization and continual modernization with the most technically up-to-date machinery, is applied in all machining work in order to guarantee the obligation we assume towards the Certified Quality of our compressors.



Oil separator

In the "SCI", series the oil separation occurs in two stages: the first stage of mechanical oil separation takes place inside the compressor, the finer second stage occurs in coalescence oil removing elements. Micro-fibres separate the oil drops from compressed air: The separated oil, in big drops, is sent back to the compressor lubricating circuit.

Rotors

The heart of every screw compressor is the air end. The multistage automatic screw manufacturing process, operated with latest CNC machines and the use of top grade materials assure the closest tolerances as well as greater reliability. A final grinding process, coupled with computer operated multistep rotor control guarantees 100% accuracy of each rotor profile.

Bearings

Because of rotational speeds and bearing loads T.M.C. screw compressors are equipped with, top quality bearings that provide a high bearing capacity and assure long bearing life.

Valves

The performance of a compressor is influenced by the quality of its valves. All T.M.C. "SCI" compressors are fitted with valves specifically designed to ensure economical operation and high reliability.

Oil Injected Integrated Screw Compressor for air

Sizes 2,2 to 11 kW

SCI Series- Product feature	Pag. 1
SCI6	Pag. 2
Outside view drawing/ Data tables	
SCI7	Pag. 3
Outside view drawing/ Data tables	
SCI8-BM	Pag. 4
Outside view drawing/ Data tables	
SCI8-FM	Pag. 5
Outside view drawing/ Data tables	
SCI8 G	Pag. 6
Outside view drawing/ Data tables	

SCI series

Product features

Main features

- New profile 5/6 lobe relation
- High volumetric efficiency
- Low running cost
- Low air discharge temperature
- Low noise level
- Discharge pressure range of 3 barg to 13 barg (43.5 psig to 195 psig)

Integration

- Thermostatic valve
- Minimum pressure valve
- Intake regulator
- Oil filter
- Air filter
- Oil separator filter
- Solenoid valve
- Oil recovery system

Sizes

SCI6

SCI7

SCI8

SCI8BM - SCI8FM

BM Base Mounted

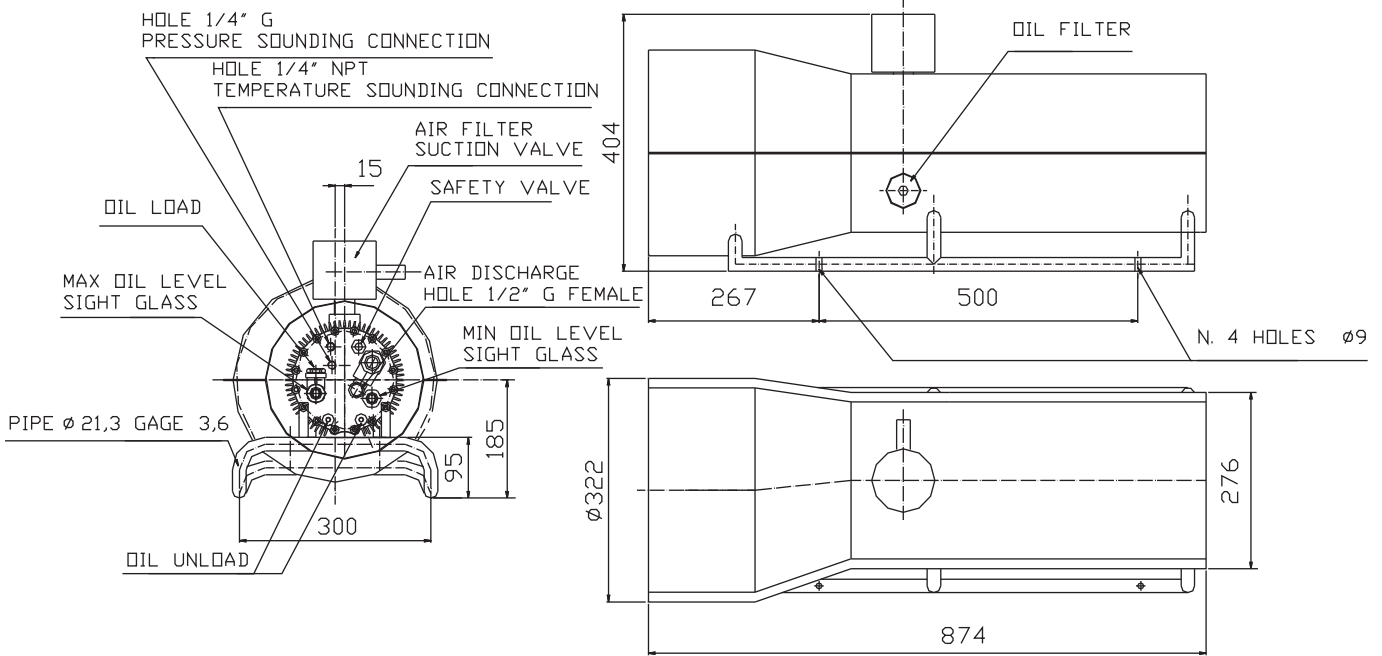
FM Flange mounted

Assembly system

The assembly systems for the SCI series are:

- base plate mounted
- flange mounted

Outside view drawing



Data Tables

Pressure	Power	Air Capacity
7 barg	2,2 kW	0,30 mc/min
100 psig	3 HP	10,5 cfm

Pressure	Power	Air Capacity
7 barg	3 kW	0,40 mc/min
100 psig	4 HP	14 cfm

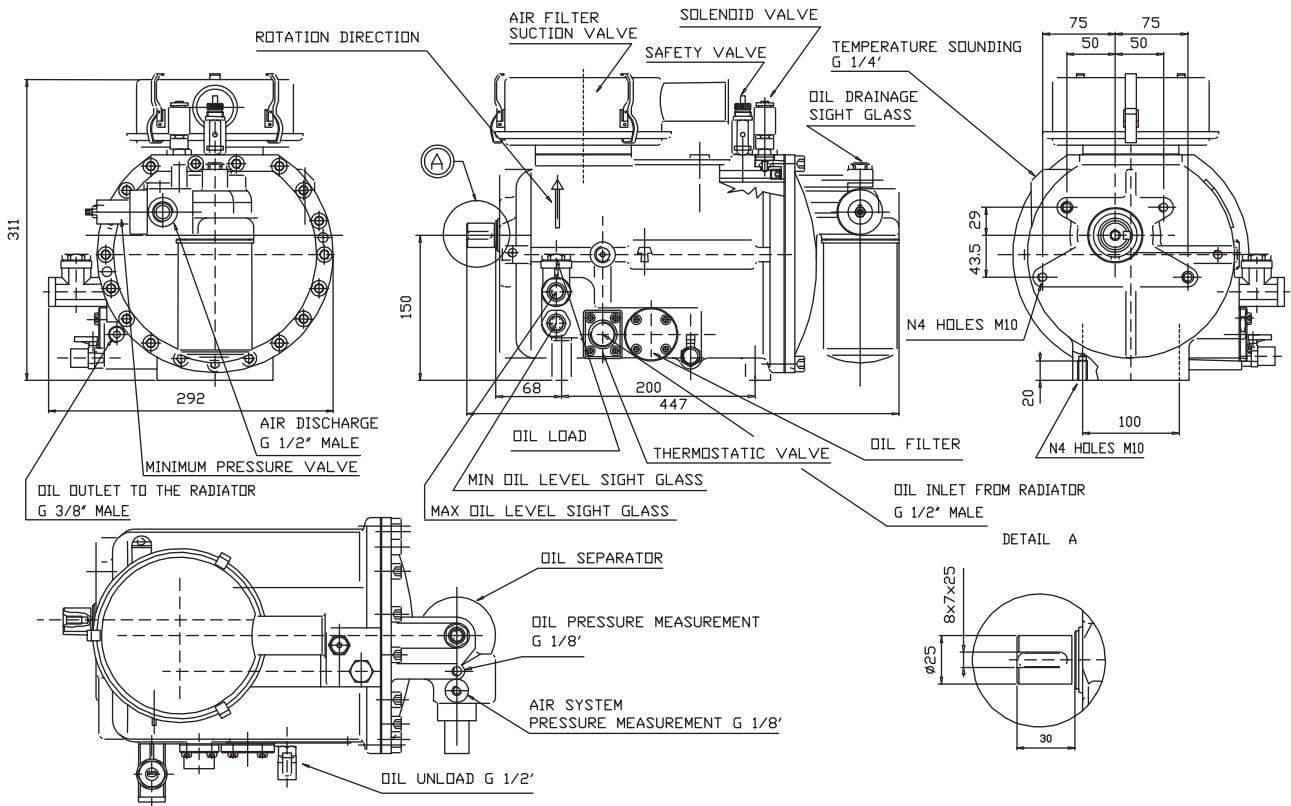
Pressure	Power	Air Capacity
10 barg	2,2 kW	0,23 mc/min
145 psig	3 HP	8 cfm

Pressure	Power	Air Capacity
10 barg	3 kW	0,32 mc/min
145 psig	4 HP	11,5 cfm

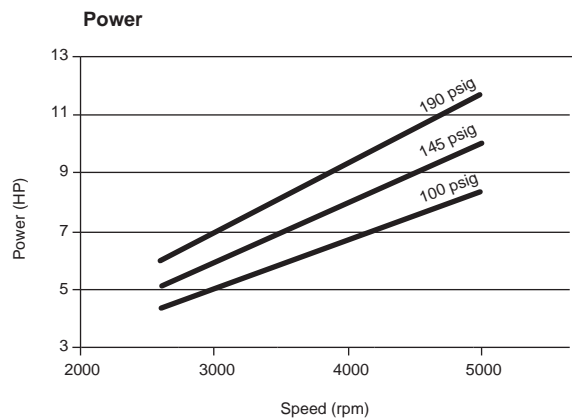
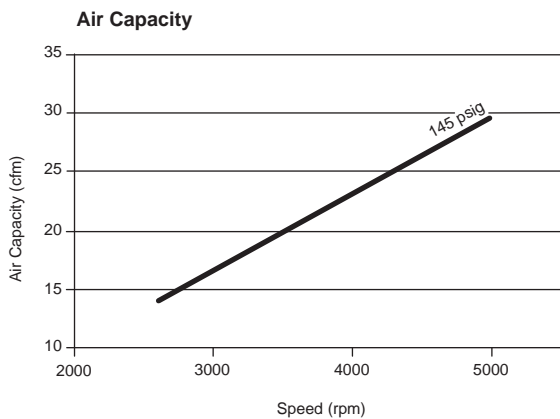
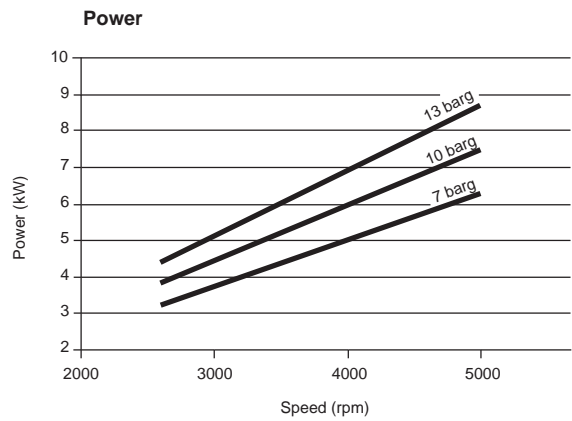
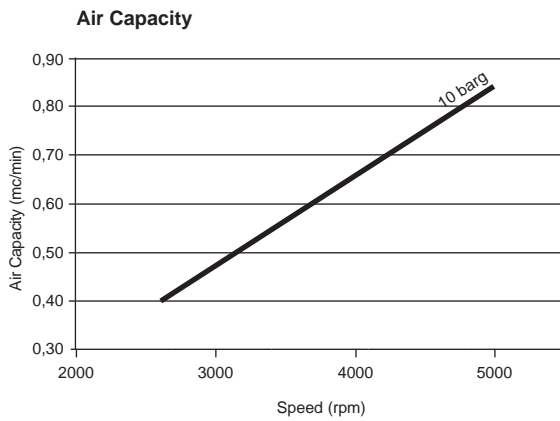
Drive: Male
 Lobe combination: 5/6
 Male rotor size: 71,6 mm
 Female rotor size: 47,5 mm
 L/D: 1,25

Working pressure: min 3 barg/40 psig – max 10 barg/145 psig
 Weight: 60 Kg – 132 lbs

Outside view drawing



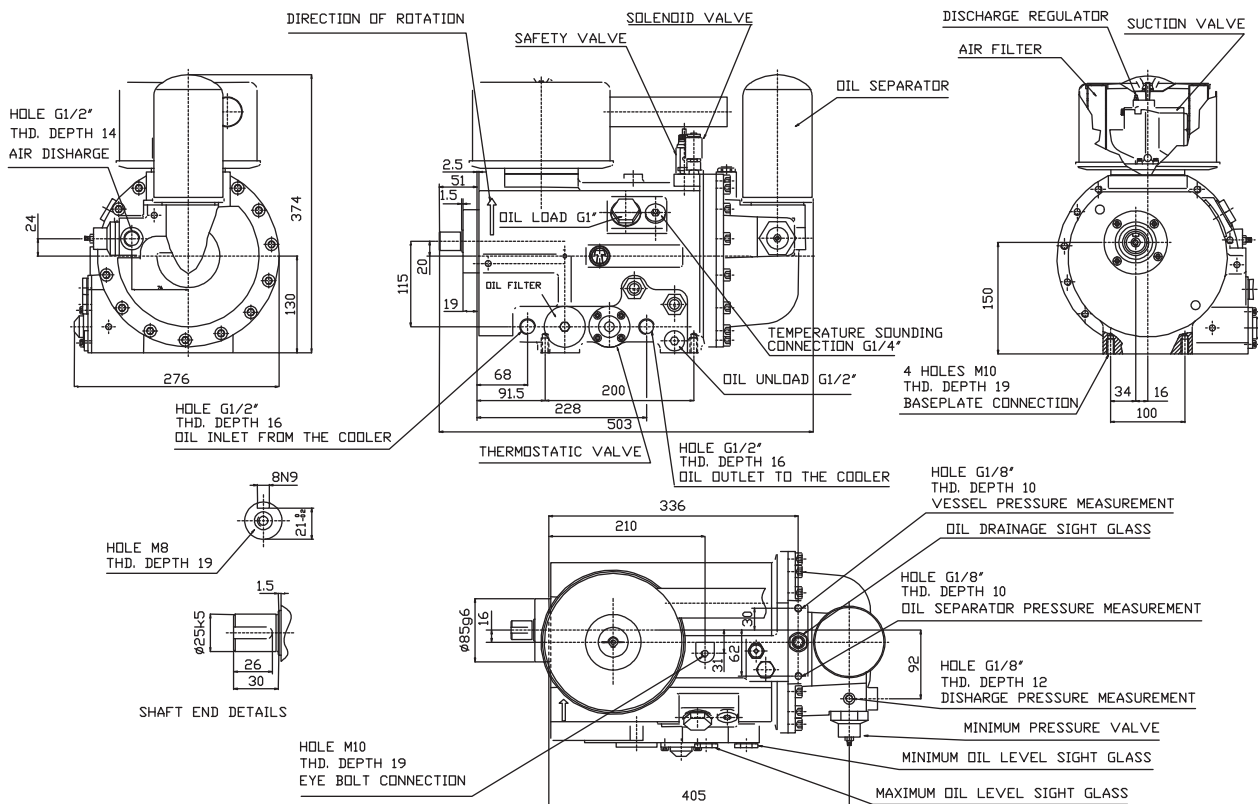
Data Tables



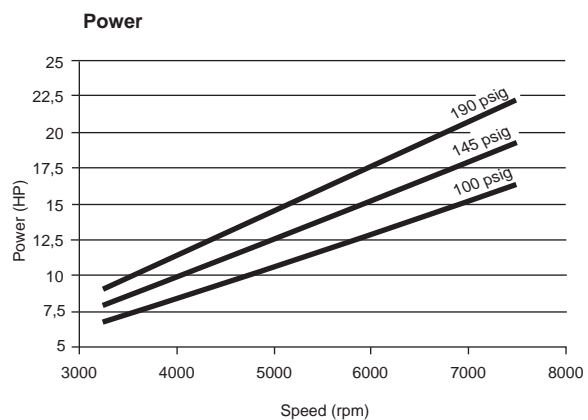
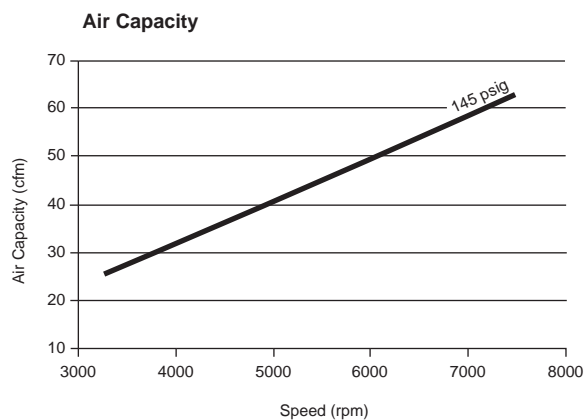
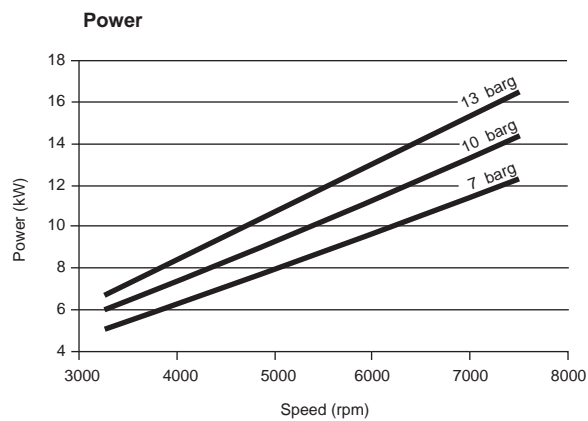
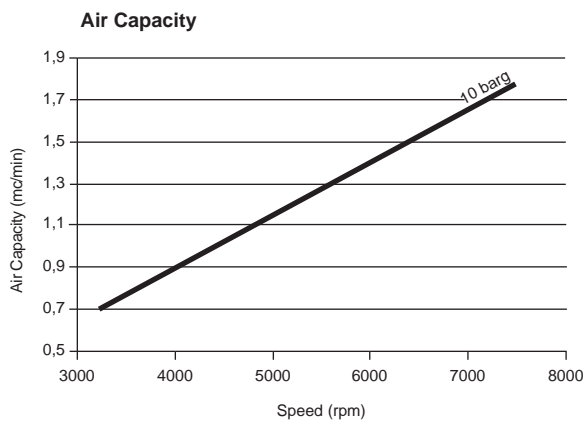
Drive: Male
 Lobe combination: 5/6
 Male rotor size: 74 mm
 Female rotor size: 61,6 mm
 L/D: 1,25

Working pressure: min 3 barg/40 psig – max 13 barg/190 psig
 Weight: 46 Kg – 101 lbs

Outside view drawing



Data Tables

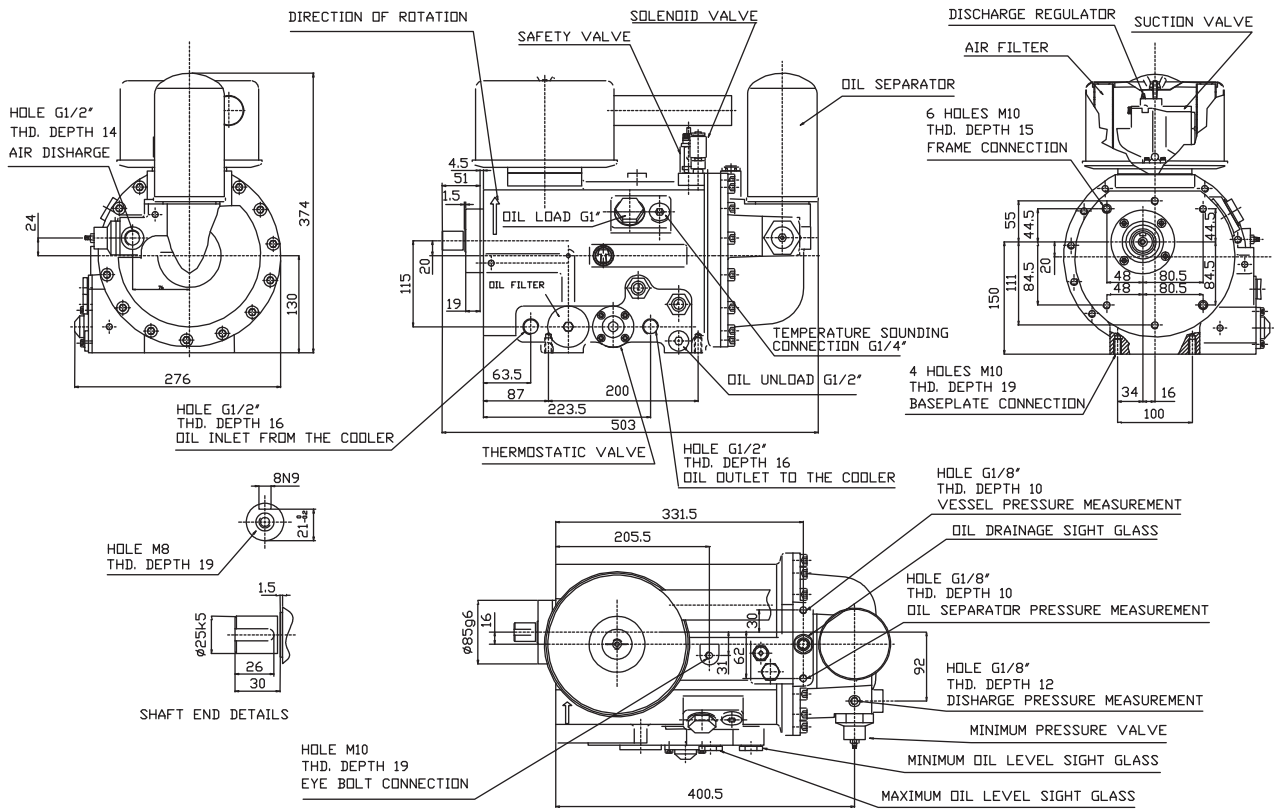


Drive: Male
 Lobe combination: 5/6
 Male rotor size: 74 mm
 Female rotor size: 61,6 mm
 L/D: 1,65

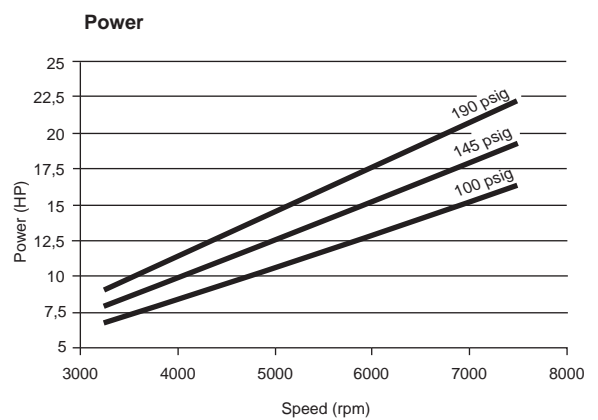
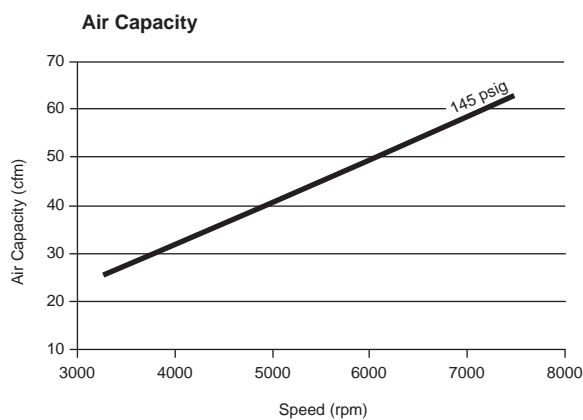
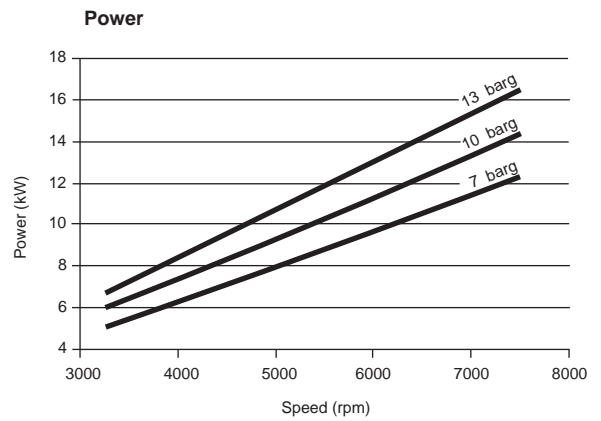
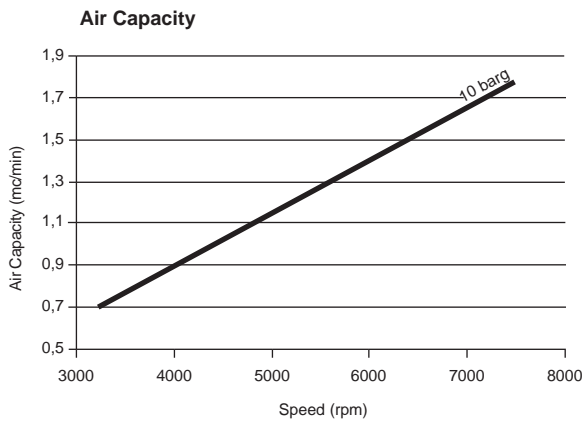
Working pressure: min 3 barg/40 psig – max 13 barg/190 psig
 Weight: 52 Kg – 115 lbs

SCI8FM

Outside view drawing



Data Tables



Drive: Male
 Lobe combination: 5/6
 Male rotor size: 74 mm
 Female rotor size: 61,6 mm
 L/D: 1,65

Working pressure: min 3 barg/40 psig – max 13 barg/190 psig
 Weight: 52 Kg – 115 lbs

TM.C. S.p.A. Termomeccanica Compressori

Via del Molo 3 · 19126 La Spezia (SP) · Italy
Tel. +39 - 0187- 552489
Fax +39 - 0187-552464
E-mail: compressors@termomeccanica.com

www.tmc.termomeccanica.com