

**250 CDIS
OPERATORS, MAINTENANCE,
AND PARTS MANUAL**

SERIAL NUMBER _____
MODEL NUMBER _____



1761 Roberts Drive
LaPorte, Indiana 46340

PHONE: 219-4787
4788
4789
FAX: 219-461-7470
WWW.BOSSSMITH.COM

P/N: 303151 REV A
03/17/2003

TABLE OF CONTENTS

SPECIFICATIONS	1
INTRODUCTION	2
SECTION 1 SAFETY	5
1.1 TOWING	5
1.2 PARKING	6
1.3 BEFORE START-UP	7
1.4 COMPRESSOR USE AND AIR	7
1.5 SERVICING	8
1.6 LIFTING	8
SECTION 2 DESCRIPTION	9
2.1 INTRODUCTION	9
2.2 ROTARY COMPRESSOR COMPONENTS	9
2.3 DIESEL ENGINE COMPONENTS	11
2.4 CHASSIS	11
2.5 ENCLOSURE	12
2.6 INSTRUMENT PANEL DOOR	12
SECTION 3 OPERATION	13
3.1 START UP PREPARATION	13
3.2 STARTING PROCEDURE	13
3.3 EMERGENCY SHUTDOWN	13
3.4 ROUTINE SHUTDOWN	13
SECTION 4 MAINTENANCE	14
4.1 WHEEL BEARINGS	14
4.2 SAFETY CHAINS	15
4.3 ENGINE FUEL SPECS	16
4.4 ENGINE OIL AND FILTER	17
4.5 ENGINE COOLING SPECS	17
4.6 FAN	18
4.7 RADIATOR PRESSURE CAP	19
4.8 RADIATOR	19
4.9 COMPRESSOR OIL	19
4.10 COMPRESSOR ENGINE AND OIL FILTER MAINTENANCE	22
4.11 COMPRESSOR OIL THERMOSTATIC VALVE	24
4.12 COMPRESSOR AIR/OIL SEPERATOR	24
4.13 BELTS & BELT ADJUSTMENT	25
4.14 CONTROL- OPERATION ADJUSTMENTS	25
4.15 INSTRUMENTS	27
4.16 BATTERY	28
4.17 MAINTENANCE SCHEDULE	28
4.18 DAILY OPERATION	28
4.19 MAINTENANCE SCHEDULE CHART	30
4.20 RECOMMENDED SPARE PARTS	31
4.21 PROCEDURE FOR ORDERING PARTS	31
SECTION 5 TROUBLESHOOTING	32
WARRANTY	40

OWNER'S RESPONSIBILITY

Your new Smith Air Compressor was engineered, built and tested to ensure the user both dependable and economical service. This compressor has also been certified as conforming to the applicable Noise Emission standards of the Environmental Protection Agency.

Continuation of the performance built into this unit depends upon the care it received in use. Therefore, operation and maintenance procedures described in this manual should be followed carefully. The operator and service personnel responsible for the care of this unit should be thoroughly familiar with this information.

It is the owner's and/or operator's responsibility to perform all safety checks and to ensure that all lubrication, maintenance instruction and recommended practices are followed for safe operation. If disassembly or replacement is required, particularly of internal parts, we recommend the owner see his dealer and not attempt the repair himself.

It is owner's responsibility to ensure that the preventive maintenance program is followed at the recommended intervals. Proper care and service will assure long service life with a minimum of problems and operating expenses.

We recommend that the owner and operator be thoroughly familiar with the contents of the manual.

If you encounter difficulties which you cannot diagnose our service personnel are prepared to help you. Our toll free number is 1-800-635-6587. Out side the continental United States and Canada our number is 219-324-7776.

The model and serial number information is requested on all correspondence. This information can be found on the Model Number Identification Plate. The information contained on the identification plate should be transferred to the cover page of the manual for future reference.

WARNING

ALL UNITS ARE SHIPPED WITH A DETAILED OPERATORS AND PARTS MANUAL. THIS MANUAL CONTAINS VITAL INFORMATION FOR THE SAFE USE AND EFFICIENT OPERATION OF THIS UNIT. CAREFULLY READ THE OPERATORS MANUAL BEFORE STARTING THE UNIT. FAILURE TO ADHERE TO THE INSTRUCTIONS COULD RESULT IN SERIOUS BODILY INJURY OR PROPERTY DAMAGE.

AIR COMPRESSOR SAFETY PRECAUTIONS

Safety is basically common sense. There are standard safety rules but each situation has its own peculiarities, which cannot always be covered by rules. Therefore with your experience and common sense, you are in a position to do something about safety. Lack of attention to safety can result in: accidents, personal injury, reduction of efficiency and worst of all - Loss of Life. Watch for safety hazards. Correct them promptly. Use the following safety precautions as a general guide to safe operation:

Do not attempt to remove any compressor parts without first relieving the entire system of pressure.

Do not attempt to service any part while machine is operating.

DANGER

CHECK THE COMPRESSOR SUMP OIL LEVEL ONLY WHEN THE COMPRESSOR IS NOT OPERATING AND SYSTEM IS COMPLETELY RELIEVED OF PRESSURE. OPEN SERVICE VALVE TO INSURE RELIEF OF SYSTEM AIR PRESSURE WHEN PERFORMING MAINTENANCE ON COMPRESSOR AIR/OIL SYSTEM. FAILURE TO COMPLY WITH THIS WARNING MAY CAUSE DAMAGE TO PROPERTY AND SERIOUS BODILY HARM.

Do not operate the compressor at pressure or speed in excess of its rating as indicated in "Compressor Specifications".

Periodically check all safety devices for proper operation.

Do not play with compressed air. Pressurized air can cause serious injury to personnel.

Exercise cleanliness during maintenance and when making repairs. Keep dirt away from parts by covering parts and exposed openings.

USER MODIFICATION

This Smith Air Compressor incorporates numerous features to minimize noise emissions from the unit during operation. This configuration has been tested for noise emissions at conditions specified by the U.S. Environmental Protection Agency. Conformance to regulations requires the incorporation of the following notification and definition in the OPERATION AND MAINTENANCE MANUAL.

TAMPERING WITH NOISE CONTROL SYSTEM PROHIBITED

Federal law prohibits the following act:

1. The removal, rendering inoperative, other than for purposes of maintenance, repair or replacement of any device or element of design incorporated into any new compressor for the purpose for noise control prior to its sale or delivery to the ultimate purchaser.
2. The use of the compressor after such device or element of design has been removed or rendered inoperative by any person.

Among the acts included in the prohibition against tampering are those listed:

1. Removal or rendering inoperative any of the following:
 - a. The engine exhaust system including the manifold, muffler or tailpipe.
 - b. Any of the enclosure components and associated sound barrier materials.
 - c. The sound baffles in the intake, exhaust and cooling system gas paths.
 - d. The air intake system including the air cleaner, the intake ducting, valve cover and gaskets.
2. Removal of any of the following:
 - a. Engine mounts or other sound isolating barriers in the system.
 - b. Fan shrouding and sound hood.
3. Operation of the compressor with any of the enclosure doors open.

SECTION 1 SAFETY

1.1 TOWING OVERVIEW

- The hitch to coupler is a pinch point. Keep hands and fingers clear
- Check towbar connections
- Secure safety chains-couple curbside chain shorter
- Replacement tires should be of the same size and rating as the original equipment. Wheel lug bolts or wheel-bearing nuts must be tightened to a specific torque.
- Raise third wheel or stand
- Don't exceed speed limit
- Remember your vehicle is longer than usual with compressor attached
- Never tow trailers unless all electrical lights and brakes are connected and working properly (if so equipped).

PREPARING TO TOW

1. Carefully inspect the air compressor ball hitch or pintle, drawbar and chains, look for excessive wear, corrosion, crack, bend, dented or otherwise deformed or degraded member, loose nuts, bolts or other fasteners. Do the same on the towing vehicle's hitch and related hardware. If inspection shows any worn or damaged parts **DO NOT TOW** the compressor until repairs are made.

**TORQUE SPECIFICATIONS
HITCH FASTENER 150 FT/LBS
WHEEL LUG FASTENERS 65/70 FT/LBS
SAFETY CHAIN FASTENERS 50 FT/LBS**

2. Choke or block the compressor wheels and raise the drawbar of the compressor to the approximate level of the towing vehicle hitch.
3. Back the towing vehicle to the compressor and lower the compressor on the hitch.
4. Engage, close and lock the coupling device.
5. Attach safety chains, a couple of curbside chains as well, they may be shorter than the other chains.

6. Attach electrical and brake connections to connections on the tow vehicle, when so equipped.
7. Fully retract front screw jack and rear stabilizer legs if unit is so equipped. Place any retractable stand in a full up and locked position with the stand horizontal.
8. Carefully inspect the tires and check the tire pressure.
9. Test all running, tail, stop and directional lights. Make sure that all lights, reflectors and reflecting surfaces are clean and in good condition.
10. Disconnect and store service air hoses and tools in the tow vehicle.
11. Close and latch the hood and any access panels.
12. Set the parking brake in the towing vehicle. Only then release any compressor brake and remove chocks and blocks from compressor wheels.
13. Test running brake operation, if so equipped, including any breakaway switch.

TOWING

1. Never exceed 55 miles per hour (88 kilometer per hour)
2. Adjust speed to reflect weather and road conditions.

1.2 PARKING

CHOOSING A PARKING SITE

1. Park the compressor on a level firm area. Never park on a grade of more than 15 degrees (27%). If you must park on any grade, park across the grade so that the compressor does not tend to roll.
2. Park so that the wind carries exhaust fumes and radiator heat away from the compressor inlet.
3. Park away from work site dust.
4. Stay clear of electrical power lines. Keep the towing vehicle or equipment carrier, compressor, hoses, tools and all personnel at least 10 feet from power lines and buried cables.

PARKING PROCEDURES

1. Chock or block the wheels and set the compressor brake, if so equipped.
2. Disconnect the brake and electrical connections, if so equipped.
3. Disconnect the safety chains and wrap them around or hook.
4. Lower any front jack or stabilizer legs, if so equipped.

5. Lower and lock any caster wheel.
6. Unhitch the compressor from towing vehicle.
7. Move the towing vehicle clear of the compressor
8. Immediately erect hazard indicators, barricades and if working at night, light flares to keep others clear of the compressor.

1.3 BEFORE STARTING THE COMPRESSOR

1. Check fluids levels and for possible leaks.
2. Use adequate hose and couplings with safety locks or pins.
3. Remove all tools and/or loose items from engine compartment.
4. Relieve any pressure in receiver tank.
5. Use proper eye and ear protection.

1.4 COMPRESSOR USE AND COMPRESSED AIR

1. Air from this machine is not fit for human consumption-do not use air for breathing or food processing.
2. Never operate in an enclosed area.
3. Never use compressed air to clean your clothes and never direct it at another person, it can kill.
4. Always wear eye protection.
5. Install check valve ("OSHA") upstream of hose to prevent hose whip in case of a rupture.
6. Keep doors or hoods closed on machines in operation.
7. Do not touch hot surfaces or moving parts, such as exhaust or fans.
8. Do not adjust or restrict relief valves.
9. Do not refuel while machine is running; shut down and allow to cool before refueling.
10. Do not jump-start with cable connections directly on battery.
11. To prevent back strain, only the smallest air compressors should be unhitched by hand. Drawbars on all other units must be raised and lowered by a jack, chain fall or other lifting device.
12. Do not use air at pressure higher than 30 PSIG (207 KPA) for cleaning purposes. Use of higher air pressure can cause injury to the operator.
13. Keep compressor hoods closed except when making repairs or adjustments or servicing the compressor.
14. Make sure all personnel are out of and clear of the compressor before starting or operating it.
15. Do not use ether cylinders or air line antifreeze compound in confined area.

1.5 SERVICING

1. Before servicing compressor, relieve receiver pressure and allow to cool.
2. Be sure all opened doors and hoods are propped and secured.
3. Disconnect battery before any work is to be performed.
4. Wipe up all spills resulting from servicing.
5. Disconnect the grounded (negative) battery connection before making repairs or cleaning inside the enclosure.
6. Do not use flammable solvents for cleaning the compressor.
7. Do not remove radiator cap quickly, it may cause spray of scalding coolant and severe burns to operator.
8. Make repairs only in clean, dry and well-lighted and well-ventilated areas.
9. Keep all parts of the body and any hand held tools or other metal objects away from exposed live parts of the electrical system.
10. Replace damaged fuel tanks or lines immediately. **DO NOT WELD** on or near fuel tanks or lines.
11. Make sure all personnel are out of the compressor before closing and latching hoods.
12. Radiator coolant is under pressure. When checking coolant in radiator, loosen cap slowly first, to relieve pressure before removing cap completely.

1.6 LIFTING

1. If the compressor is provided with a lifting bail, then lift by the bail. If no bail is provided, then lift by sling.
2. When lifting by helicopter, use a sling. Do not lift by unit lifting bail.
3. Inspect the entire lifting, rigging and supporting structure to ensure it is in good condition and has a rated capacity of at least the gross weight of the compressor plus 50%.

SECTION 2 DESCRIPTION

2.1 INTRODUCTION

Your Smith Air Compressor portable is a gas/diesel driven Rotary Screw Compressor unit that provides superior performance and reliability along with a minimal amount of required maintenance.

2.2 ROTARY COMPRESSOR COMPONENTS

COMPRESSOR DESCRIPTION

The compressor assembly is a positive displacement, oil flood lubricated, screw type unit employing one stage of compression to achieve the desired pressure. Components include a housing (stator), two screws (rotors), gears, bearings and bearing supports.

In operation, two helical grooved rotors mesh to compress air. Inlet air entering the casing is compressed at the male lobes roll down the female grooves, pushing trapped atmospheric air along and compressing it in one stage of compression. This process delivers smooth-flowing air at full pressure to the receiver.

To illustrate the compression sequence, consider the action of the male lobe as similar to a ball. As a helix rotates, the ball (male lobe) meshes with the groove to start a compression cycle with trapped atmospheric air. As the ball moves down the groove, air is compressed. Atmospheric air fills in behind the ball preparing the groove for another compression cycle as rotation continues and the male lobe again meshes with the groove.

During the compression cycle, oil is injected into the compressor for the purpose of lubrication, cooling and sealing. Compressed air laden with oil leaves the compressor unit through a discharge port, which is designed to give optimum performance within the desired discharge pressure range.

AIR FILTER

The Rotary Screw Compressor unit and engine are protected by a high efficiency, two-stage air filtering system. This is a dry filter that requires maintenance when the air filter restriction gauge says it is time.

OIL COOLING

The compressor is an “oil flooded” compressor. The oil lubricates, seals and cools the internals of the compressors as it is injected into the compressor. The oil goes through the compressor with the air where it picks up the heat generated by the compression process then seals the spaces between moving parts and lubricates bearings. The hot oil must be cooled. It is separated from the air, passed through the oil cooler (mounted next to the engine radiator), through a thermostatic valve (that helps to rapidly warm cold oil at start-up), then through a full flow oil filter and then back into the compressor. See instructions 4.10 and 4.13 for oil filter element and air/oil separating element servicing.

AIR/OIL SEPARATOR

At the compressor discharge the compressed air and the hot oil flow into a steel ASME coded pressure vessel (rated at 175 psig-250psig) that acts as a reservoir for the air and separates out the oil. From the bottom of this oil sump the oil leaves the vessel on its way to the oil cooler. The air and the slight oil mist still entrained in the airflow through the separator element, which removes the last of the oil from the air. The air passes on out to its final use and the separated oil goes through the scavenge line to the compressor intake to re-enter the system.

As the compressor air leaves the receiver it goes through a minimum pressure valve that is set to maintain at least 80 psig (55kpa) in the receiver when the compressor is running. The purpose of this pressure is to insure that there is pressure to force the oil out of the bottom of the receiver, through the oil cooling system so that sufficient oil is injected into the compressor.

CONTROL SYSTEM

The Smith Air Compressor portable is simple to operate. Starting procedure is explained in section 3 and on the instrument panel door of the compressor. Each machine has an On/Off switch and a safety bypass switch that bypasses the safety shutdowns. Once the machine is “on line” and in the run position, control is automatic. The control system is

automatic. The control system senses the need for air and adjusts the speed of the engine and compressor as well as the opening of the compressor inlet valve to supply the amount of air needed. If the air demand is zero, the engine and compressor “idle” and the inlet valve is shut to control the air entering the compressor. If the demand is maximum, the opposite happens, full speed and wide-open inlet valve. Intermediate air demands give intermediate speeds and valve openings for maximum operating efficiency. Service and adjustments are in section 4.14.

2.3 ENGINE COMPONENTS

ENGINE DESCRIPTION

The engine in each Smith Air Compressor portable compressor is selected to have reserve horsepower and speed necessary to drive the compressor and all accessories when operating up to a discharge pressure 100 psig (686kpa) to 220 psig (1509kpa).

RADIATOR

The radiator is selected to handle the heat load of the engine. Mounted next to the compressor oil cooler. Cooling air is moved through these two coolers with a specially selected engine fan. The system is designed to handle extreme heat conditions.

FUEL SYSTEM

All units are supplied with fuel tank capacity adequate for a day’s normal operation, fuel filtering system and optional low fuel shutdown. See section 4.3 for fuel servicing.

MUFFLER

Engine noise is reduced by a durable, low restriction engine muffler.

2.4 CHASSIS

FRAME

The entire compressor frame and body is “utilized” and constructed of 3/16” or 10 gauge steel plate, resulting in light weight while providing a much stronger body than conventional designs of light sheet metal over structural members.

TOWBAR AND HITCH

At the end of a rugged steel drawbar there is either a ball hitch, a pintle hitch or a combined ball/pintle hitch-selection is made at time of purchase. (Adjustable height optional)

RUNNING GEAR

Axle, wheels and tires are all sized for their job. This unit is equipped with a single axle. The lightweight design of the compressor plus the axle design make towing at highway speed possible.

2.5 ENCLOSURE

Enclosure is 14 gauge metal with powder coat finish. Each access panel has lockable handles with mechanical props.

2.6 INSTRUMENT PANEL DOOR

Lockable instrument panel doors provide access to all controls and gauges.

SECTION 3 OPERATION

3.1 START UP PREPARATION

1. Check engine and compressor oil levels. Do not overfill
2. Check coolant level in radiator. (Fill at coolant recovery bottle).
3. Check for fuel, oil and coolant leaks
4. Check air cleaner, clamps and hoses
5. Check battery connections
6. Check and adjust tension of fan belts.
7. NOTE: This unit has minimum air pressure valve to assure compressor oil flow. There will be no airflow from the compressor if receiver pressure is less than 80 PSIG.

3.2 STARTING PROCEDURE

1. Close service valves and move unloader valve to "START" position
2. Press and hold bypass button and turn starter switch to "START" position. If engine fails to start. DO NOT attempt to restart until cranking motor stops rotating. Before restarting, starter switch must be returned to "OFF" position
3. When engine starts, release starter switch and hold bypass button down until oil pressure reaches 15PSI then release. Maintain unloader valve at "START" position until engine is warm and operating smoothly, then move unloader valve to "RUN" position.

3.3 EMERGENCY SHUTDOWN PROCEDURE

Turn start stop switch to "OFF" position

3.4 ROUTINE SHUTDOWN PROCEDURE

1. Move unloader to start position
2. Allow compressor to run 2 to 3 minutes to cool
3. Move on/off switch to "OFF" position

SECTION 4 MAINTENANCE

4.1 WHEEL BEARINGS

Wheel bearings leave the factory properly packed and adjusted and under normal circumstances should require inspection every six months or so, depending upon use.

INSPECTION

Clean exterior of wheel bearing cap before removal. Remove cap and check bearing for damage, adequate grease, cleanliness, rust and end play. End play should be between .001 and .012 (.025 to .03 mm). Correct defective bearings and replace damaged bearings.

GREASE THE BEARINGS

1. Remove the rubber plug from the end of the grease cap.
2. Place a standard grease gun onto the grease zerk located in the end of the spindle. Make sure the grease gun nozzle is fully engaged in the fitting.
3. Pump grease into the zerk. The old, displaced grease will begin to flow back out the cap around the grease gun nozzle.
4. When the new, clean grease is observed, remove the grease gun, wipe off any excess and replace the rubber plug in the cap.

MANUFACTURER RECOMMENDED WHEEL BEARING LUBRICATION SPECIFICATIONS

GREASE:

Thickener type	Lithium Complex
Dropping point	230 degrees C (446 degrees F) min
Consistency	NLGI No. 2
Additives	EP, Corrosion & Oxidation Inhibitor
Base Oil	Solvent refined Petroleum
Base Oil Viscosity	@ 40 degrees C (104 degrees F) 150 cst (695 SUS min)
Viscosity index	80 minimum
Pour point	-10 degrees C (14 degrees F) minimum

APPROVED SOURCES:

Mobile oil	Mobil grease HP
Exxon/Standard	Ronex MP
Kendall Refining Co.	Kendall L-427
Ashland Oil Co.	Valvoline Val-plex EP grease
Pennzoil Prod. Co.	Premium Wheel Bearing Grease 707L

CLEANING AND REPACKING

1. If needed, remove bearing from spindle and clean in solvent. Remove all dirt and old grease from bearing, spindle and bore of hub.

CAUTION: DO NOT SPIN BEARING WITH AIR HOSE BLAST AS THIS WILL DESTROY PRECISE BEARING SURFACES.

2. Pack grease in new or cleaned bearing with wheel bearing repacker or manually so that grease is driven solidly in between bearing rollers.
3. Place cleaned hub on spindle followed by either new or cleaned repacked bearing, washer and nut.
4. Tighten spindle to 50 ft. lbs. (7 kg m) while rotating hub to seat the bearing.
5. Loosen the nut to remove preload torque. Do not rotate hub.
6. Finger tighten the nut and place lock tab in the first nut castellation which lines up with the lock tab.

Nut should be free to move with the only restraint being the lock tab. End play must be between .001 to .012 (.25 to .3 mm).

4.2 SAFETY CHAINS

Safety chains should be attached on opposite sides of the compressor tongue and crossed under the tongue when passed forward to the towing vehicle so as to cradle the tongue in the event of a breakaway. Slack should be sufficient to permit full turns.

4.3 ENGINE FUEL SPECIFICATIONS

WARNING:

DO NOT MIX GASOLINE OR ALCOHOL WITH DIESEL FUEL. THIS MIXTURE CAN CAUSE AN EXPLOSION.

CAUTION:

DUE TO THE PRECISE TOLERANCES OF DIESEL INJECTION SYSTEMS, IT IS EXTREMELY IMPROTANT THAT THE FUEL BE KEPT CLEAN AND FREE OF DIRT OR WATER. DIRT OR WATER IN THE SYSTEM CAN CAUSE SEVERE DAMAGE TO BOTH THE INJECTION PUMP AND THE INJECTION NOZZLE. USE ASTM NO.2 D FUEL WITH A MINIMUM CETANE NUMBER OF 40. NO.2 DIESEL. FUEL GIVES THE BEST ECONOMY AND PERFORMANCE UNDER MOST OPERATING CONDITIONS. SEE ENGINE MANUFACTURES OPERATORS/INSTRUCTION MANUAL FOR THE PROPER ENGINE FUEL FOR THE BRAND ENGINE IN YOUR SMITH AIR COMPRESSOR.

HIGH ALTITIDE AND LOW TEMPERATURE FUELS

Fuels with cetane numbers higher than 40 may be needed in high altitudes or extremely low ambient temperatures to prevent misfires and excessive smoke.

COLD WEATHER FUEL

At opening temperatures below 8 degrees C (32 degrees F) use a blend of No.1D and No.2D fuels, also know as “winterized” No.2D. NOTE: No.1D fuel can be used; however, fuel economy will suffer.

Use low sulfur content fuel having a cloud point that is at least 10 degrees below the lower expected fuel temperature. Cloud point is the temperature at which wax crystals begin to form in diesel fuel.

The viscosity of the fuel must be kept above 1.3 centistokes to provide adequate fuel system lubrication.

ENGINE FUEL FILTER

See engine manufactures operator/instruction manual for the proper fuel filter replacement changing intervals for the brand engine in your SMITH compressor.

WARNING:

KEEP HANDS AND FINGERS CLEAR OF FITTING. HIGH PRESSURE OF THE FUEL CAN CAUSE PENETRATION OF THE SKIN. SEEK IMMEDIATE MEDICAL ATTENTION IF SKIN IS BROKEN BY THE FUEL SPRAY.

4.4 ENGINE OIL AND FILTER

See engine manufactures operator/instruction manual for the proper engine oil and filter changing intervals for the brand engine in your SMITH compressor.

OIL FILTER REPLACEMENT

1. Clean the area around the lubricating filter head.
2. Remove the filter.
3. Clean the gasket surface of the filter head.

NOTE: The o-ring can stick on the filter head. Make sure it is removed.

4. Apply a light film of lubricating oil to the gasket-sealing surface before installing.
5. Install the filter as specified by the filter manufacturer.

CAUTION:

MECHANICAL OVER-TIGHTENING MAY DISTORT THE TREADS OR DAMAGE THE FILTER ELEMENT SEAL.

4.5 ENGINE COOLING SPECIFICATIONS:

Diesel engines require a balanced coolant mixture of water and ethylene glycol base antifreeze. This protects the engine cooling system from corrossions as well as freezing damage. The Smith Air Compressor portables are shipped form the factory with a 50/50 mixture of water and ethylene glycol. In tropical climates where freeze protection is not required, glycol engine coolant should still be used. It will help prevent corrosion and pitting of cylinder liners. See engine manufactures operator/instruction manual for the proper engine coolant for the brand engine in your SMITH compressor.

MIXTURES:

Antifreeze concentration level should not exceed recommended levels. To do so can cause cooling system failure.

- Use a high quality, low silicate antifreeze
- A mixture of 50% antifreeze and 50% water is required for temperatures above -37°C (-34°F).
- A mixture of 60% antifreeze and 40% water us required for environments below -37°C (-34°F). This provides protection to -54°C (-65°F).
- Never exceed a 60% antifreeze and 40% water mix.

ENGINE COOLING SYSTEM

All engines have a pressurized cooling system that contains a 50/50 mixture of water and ethylene glycol. Daily maintenance of the system includes a check of the coolant level, proper belt adjustment of fan and water pump drives, soundness of fan and cleanliness of the radiator and oil cooler to permit airflow. Further cooling system maintenance is defined in the engine maintenance manual.

COOLANT LEVEL

Before each start-up, when radiator is cold, the coolant should be checked. When needed, refill with a 50/50 solution of water and ethylene glycol, DO NOT use 100% antifreeze for “topping off”.

WARNING:

CHECK THE COOLANT LEVEL ONLY WHEN THE ENGINE IS STOPPED AND THE TEMPERATURE IS BELOW 160°F (70°C) FAILURE TO DO SO CAN CAUSE PERSONAL INJURY FROM HEATED COOLANT SPRAY.

4.6 FAN

Check the fan for cracks loose rivets and bent or loose blades. Make sure it is securely mounted. Tighten the cap screws if loose. Replace damaged fans.

WARNING:

NEVER USE THE FAN TO ROTATE THE ENGINE. THE BLADE(S) CAN BE DAMAGED CAUSING A FAN FAILURE, WHICH CAN RESULT IN PERSONAL INJURY OR PROPERTY DAMAGE.

4.7 RADIATOR PRESSURE CAP

If coolant continually spills from radiator through the overflow then the radiator cap should be tested and/or replaced with a cap of the same pressure rating, generally 13 PSI. Be sure cap is turned to the proper secure position.

4.8 RADIATOR

Any sign of leakage from the radiator may justify a pressure test to assure its soundness. Radiator leaks should only be repaired by qualified service people. Dirt that clogs the cooling fins of the radiator should be removed. The use of an air stream of high-pressure steam cleaner should be done with caution so as to not damage the delicate fins. Bent cooling fins will reduce the cooling capability of the radiator.

4.9 COMPRESSOR OIL

The life and proper operation of the compressor is dependent on adequate and clean compressor oil. DEXRON® - 111 Automatic Transmission Fluid is supplied with the new machine and should be used for proper level maintenance and for oil changes. We recommend that you use DEXRON® - 111 Automatic Transmission Fluid.

WARNING:

DO NOT REMOVE CAPS OR OTHER COMPONENTS WHEN COMPRESSOR IS RUNNING OR PRESSURIZED. BEFORE DOING SO STOP COMPRESSOR AND RELIEVE ALL INTERNAL PRESSURE.

COMPRESSOR OIL SPECIFICATIONS

It is permissible to use oils other than the ATF shown above; such as Hydraulic oil. If they are used then they must have at least the following minimum properties:

- ISO grade 32
- CPS No. 255675
- API Gravity -
- Viscosity, Kinematic
 - cst at 40 degrees C 33.6
 - cst at 100 degrees C 5.5
- Viscosity saybolt
 - SUS at 100 degrees F 173
 - SUS at 210 degrees F 45
- Viscosity index 98
- Pour point deg. C(deg F) -33(-27)
- Flash point deg.C(deg.F) 204(399)
- Oxidation stability
- Hours to 2.0 mg KOH/g acid no., ASTM D 943 >600

The advantage in using DEXRON® - III in the compressor is that it is good lubricant suitable to its application and it is readily available. There are other oils that may be used that have longer life. They are better able to stand the extreme operating conditions. Whether or not to use these oils is a decision that depends upon the operating conditions. Very frequent oil changes are necessary in extremely hot, dirty operating conditions and if the compressor is operating in a remote, difficult-to-reach service location then perhaps it would be better to use the DEXRON® - III because of availability and cost. If, however service is convenient and attentive so that the oil can be used for as long as it will provide good protection; then higher quality oils may be used that will extend the life of the compressor.

WARNING

SMITH AIR COMPRESSORS DOES NOT RECOMMEND MIXING DIFFERENT TYPES OF OILS. WHEN CHANGING TO A DIFFERENT TYPE OIL, CLEAN COOLER, AIR/OIL RECEIVER AND LINES THOROUGHLY.

ADDING COMPRESSOR OIL

1. Level the compressor to assure oil level indicator will be accurate.
2. Remove any dirt around fill cap, which is located on or near the air/oil receiver and then remove the fill cap itself.
3. Inspect the fill cap for damage and cleanliness. Replace if necessary.
4. Proper oil can then be added till the oil level reaches halfway in the sight-level tube or the “bullseye”.
5. Replace full cap securely-never put cap on without tightening immediately.
6. Do not over fill the sump tank. This will cause oil to spray out of the blowdown valve and/or service valve.

CAUTION:

DO NOT REPLACE FILL CAP WITH A PIPE CAP; SERIOUS INJURY OR DAMAGE COULD RESULT. THE THREADS ARE DIFFERENT. ALWAYS INSURE A STRAIGHT THREAD FILL CAP IS USED.

CHANGING COMPRESSOR OIL

1. Oil and air filter will help prolong oil life. If the oil appears dirty or it has a foul smell it should be replaced.
2. Change compressor oil and filter every 500 hours.
3. Remove fill cap and drain oil from the bottom of the air/oil receiver. Oil will drain more quickly and completely if it is warm from operation.
4. Close all drains and replace oil with fresh oil to proper level. Replace fill cap and run the unit briefly to see if more oil needs to be added and to insure there or no leaks.

COMPRESSOR OIL FILTER

The oil filter in the compressor lubrication system is of the full flow spin-on canister type. Initially the filter should be replaced after the first 50 hours, then every 500 hours or sooner if indicated. A dirty filter can restrict oil flow, causing high oil temperature condition, which will result in a unit shutdown.

CAUTION:
SUBSTITUTE FILTERS MAY HAVE INADEQUATE WORKING PRESSURE LIMITS, RESULTING IN ELEMENT LEAKAGE OR RUPTURE. REPLACEMENT FILTERS MUST BE THE SAME QUALITY AND TYPES AS THE ORIGINAL SMITH AIR COMPRESSORS FILTER.

COMPRESSOR OIL FILTER REPLACEMENT

1. Using a strap wrench, remove the old element and gasket.
2. Clean gasket seating surface.
3. Apply a light film of oil to the new gasket.
4. Hand tighten new element until new gasket is seated in the gasket groove.
5. Continue tightening element by hand an additional $\frac{1}{2}$ to $\frac{3}{4}$ turn.
6. Restart machine and check for leaks.

CAUTION:
MECHANICAL OVER-TIGHTENING MAY DISTORT THE THREADS OR DAMAGE THE FILTER ELEMENT SEAL.

4.10 COMPRESSOR & ENGINE AIR FILTER MAINTENANCE

ELEMENT REPLACEMENT

1. Loosen the clamps that secure the dust cup to the body and remove the cover.
2. Empty the dirt from the dust cup.
3. Remove the element.
4. Clean the canister and dust cap with a damp cloth inside and out.
DO NOT blow dirt out with compressor air.
5. At this time clean or replace the element.
6. Replace the element.
7. Reposition the cover and tighten the clamp, INSTALL WITH "TOP" UP.
7. Reset the air filter restriction indicator (if supplied) and the machine will be ready for operation.

CAUTION:

WHEN CLEANING AN ELEMENT, THE ELEMENT WILL BE DAMAGED IF YOU EXCEED THE RECOMMENDED MAXIMUM PRESSURE FOR COMPRESSED AIR. (30 PSI/200 KPA)

CAUTION:

DO NOT STRIKE THE ELEMENT AGAINST ANY HARD SURFACES AND POSSIBLY RUPTURE THE ELEMENT. NEVER BLOW DIRT OUT OF THE INTERIOR OF THE FILTER HOUSING. THIS MAY INTRODUCE DUST DOWNSTREAM OF THE FILTER. INSTEAD, USE A CLEAN DAMP CLOTH. DO NOT OIL ELEMENT.

AIR FILTER ELEMENT CLEANING

The air filter element is cleaned by using compressed air. The maximum amount of times that an element should be cleaned is (2) times; however the element should be used no longer than a period of one(1) year without changing.

Prior to cleaning an element, check the element for damage. Damaged elements must be replaced.

When cleaning the element with compressed air, never let the air pressure exceed 30 PSIG (200 kpa). Reverse flush the element by, directing the compressed air up and down the pleats in the filter media from the “clean side” of the element. Continue reverse flushing until all dust is removed. Should any oil or greasy dirt remain on the filter surface, the element should then be replaced.

ELEMENT INSPECTION:

1. Place a bright light inside the element to inspect for damaged or leak.
2. Inspect all gaskets and gasket contact surfaces of the housing. Should faulty gaskets be evident, correct the condition immediately. If the clean element is to be stored for later use, it must be stored in a clean container.
3. After the element has been installed, inspect and tighten all air inlet connections prior to resuming operation.

4.11 COMPRESSOR OIL THERMOSTATIC VALVE

The oil thermostatic valve acts as a thermostatically controlled by-pass valve and allows varying amounts of oil depending upon the temperature, to by-pass cooler during the warm up period. When circulated oil reaches a temperature of 140 ° F, the valve closes the by-pass completely and all the oil is circulated through the cooler. The oil cooler by-pass is restricted enough to cause some warm oil to flow through the cooler during the warm-up period, maintaining a higher average compressor oil temperature. This reduces condensation in the oil system and also reduces the possibility of a slug of cold oil from the cooler, causing a momentary high restriction and a temporary reduction in the oil pressure, hence oil flow.

CLEANING OIL THERMOSTAT

1. If it becomes necessary to take the thermostat apart and clean it, disassemble at the bolted flange and remove the element.
2. If coated or dirty, clean as necessary. The element and rubber seal ring should be cleaned only with hot water.
3. Inspect the element for bent or dented parts.
4. Replace any damage part during cleaning and assembling the pipe openings should be closed with tape or plugs until pipe connections made.

4.12 COMPRESSOR AIR/OIL SEPARATOR

WARNING:

DO NOT REMOVE CAPS, PLUGS OR OTHER COMPONENTS WHEN COMPRESSOR IS RUNNING OR PRESSURIZED. PERSONAL INJURY WILL RESULT. BEFORE DOING SO, STOP COMPRESSOR AND RELIEVE ALL INTERNAL PRESSURE.

The separator element is located in the top of the air-oil receiver/separator tank. Here the oil mist contained in the air is removed prior to the final discharge of air. Air should be taken only from the outlet service valves on the center of the top end of the separator-never directly from the receiver/separator fittings on the side of the tank. When the oil vapor in the discharge air becomes excessive, the separator element may need replacing. This should not be necessary more than once a year under normal operating conditions.

SEPARATOR ELEMENT REPLACEMENT

1. The element may be replaced by removing the head from the top of separator and pulling the element out. **Only a factory element should be used as a replacement.**
2. The separator element flange must have a gasket on each side to seal the head on one side and the vessel on the other. The staple in each gasket must be left in the gasket, it acts as a static ground.
3. Re-torque the head bolts uniformly to a specification of 220ft-1b.(dry) or 170ft-lb. (wet) when replacing the separator head.

4.13 BELTS & BELT ADJUSTMENT

Visually inspect the belts. Replace belts if cracked or frayed. Check engine manual for proper belt tension.

4.14 CONTROLS-OPERATION AND ADJUSTMENTS

The compressor system is designed to match air supply and engine performance with the demand. The components of the control system are, the blowdown valve, start-run solenoid, compressor inlet valve, pressure regulator and an engine air cylinder.

The start-run valve that is open in the start run position. This allows air to by-pass the pressure regulator and go directly to the compressor inlet valve, closing it and to the engine air cylinder, holding the throttle at idle. When switched to the run position, shutting off the by-pass air. Control air now has to go through the pressure regulator.

The pressure regulator is referred to as a positive type and its operation is proportional to system pressure. As pressure increases it opens, allowing air to pressurize the inlet valve and air cylinder. When there is an air demand, the pressure decreases and the regulator starts to close, relieving the pressure in the inlet valve and air cylinder. An orifice in the regulator bleeds the air out of control line between regulator, engine air cylinder and inlet valve supplies a signal proportional to the system pressure the inlet valve will modulate. With no air demand the pressure rises, the signal air from the regulator closes the inlet valve. When an air demand is present or the pressure falls, the air signal is removed allowing the inlet valve to open to match air demand.

The blowdown valve has two functions in the system. First it prevents excessive pressure in the start and unload modes by bleeding off the small amount of air being drawn in during idle. Secondly it relieves or blows down the system on shutdown. This valve is not adjustable.

ADJUSTMENT

When performing control adjustments care must be taken in regard to safety as the compressor must be running. Be aware of moving parts, as well as, hot items, such as fans, belts and exhaust components.

IDLE OR UNLOAD SPEED ADJUSTMENT (For 100 PSI System)

With the compressor warmed up and all service valves closed, move start-run switch to run position. Air pressure will build to 120 psig. If air pressure is less than 120 psig, adjust regulator up by turning the adjusting screw clockwise. If air pressure is greater than 120 psig, adjust regulator down by turning the adjusting screw counter-clockwise. Check engine speed with a photo tachometer.

If idle speed is not as listed in specifications, adjustment will be required.

Note: If your unit is rated at a higher pressure add 20psi to the working pressure for unload pressure; ex: 150 PSI working = 170 unload.

IDLE SPEED ADJUSTMENT PROCEDURES

On the injection pump throttle arm, there are two adjusting screws. The air cylinder connected to the throttle arm, this air cylinder moves throttle to increase and decrease engine speed with air demand. When adjusting idle speed, the air cylinder should be fully extended moving throttle arm towards front of engine. To adjust idle speed, loosen locknut on adjusting screw towards rear of engine. Turning adjustment screw clockwise will increase speed. If proper speed cannot be obtained with the adjustment screws, it may require loosening the locknut on air cylinder shaft and adjusting clevis. By turning clevis onto shaft speed will increase, by turning clevis out, speed will decrease. After proper speed is set, tighten all locknuts.

PRESSURE REGULATOR ADJUSTMENT

After setting idle speed and compressor is in run position, the pressure regulator adjustment can be checked and adjusted if required.

The air cylinder receives an air signal from the pressure regulator. This air cylinder controls engine speed with air demand. To adjust pressure regulator, with compressor in the run position, open service valve slightly to allow air to bleed out. By watching air pressure gauge note when air cylinder starts to retract, this should be approximately 105 psig. If cylinder does not start to retract until at a lower pressure, the regulator is set to low. The regulator has a locknut and adjustment screw. Loosen the locknut and turn adjustment screw clockwise to increase the pressure. Turning screw counter clockwise decreases pressure. After adjustment is complete, tighten locknut.

Note: If you unit is rated a higher pressure add 5 PSI to the working pressure; ex: 150 PSI working = 155 retract pressure.

RATED SPEED ADJUSTMENT

With the compressor in a run position open service valve slowly until pressure gauge is reading 100 PSI (working pressure). Check that air cylinder is fully retracted, moving throttle arm to full speed and check the engine speed. Adjust the speed to within the specifications in the front of this manual.

To adjust there are two adjusting screws on throttle arm, the adjusting screw towards rear of engine is the high-speed adjustment. Loosen locknut on adjustment screw by turning screw counter clockwise, speed increases, after setting speed to specifications, tighten locknut, close service valve and allow compressor to unload and return to idle.

4.15 INSTRUMENTS

The standard control panel has gauges for air pressure, oil pressure, coolant temperature, ammeter and hourmeter. Also included is an ignition switch, start/run valve and safety bypass switch. The safety bypass switch cuts out the low oil pressure switch to permit starting. The low oil pressure switch is normally opens and closes upon activation. Safety shutdowns are also provided for high compressor oil temperature and high engine coolant temperature. These switches are normally closed and upon activation. If the compressor will not start or shuts down while in operation without an obvious malfunction, each switch can be checked individually by connecting a jumper wire across the terminal posts one switch at a time. The defective switch must be replaced.

NOTE: the existing wiring harness must be connected to the safety switches while making the above check.

4.16 BATTERY

Batteries supplied with Smith Air Compressor are selected to have ample cold cranking amperes for quick starts in inclement weather. Keep them fully charged and if replacement is necessary the replacement must be of equal capacity.

WARNING:

BATTERY GAS CAN EXPLODE CAUSING ACID BURN TO SKIN AND BLINDNESS. DO NOT OVERCHARGE OR JUMP THE BATTERY INCORRECTLY.

4.17 MAINTENANCE SCHEDULE

A good maintenance program is the key to long machine life. Follow a regular schedule of inspection and servicing, based on operating hours. Keep an accurate logbook for maintenance, servicing and operating hours. Use the factory recommended Periodic Maintenance schedule (based on favorable operating conditions) to serve as a guide to get long and efficient machine life. Regular service periods are recommended for normal service and operating conditions. For engine maintenance, refer to the engine manual where a detailed description of service instructions is given. For continuous duty, extreme temperature, etc., service more frequently. Neglecting routine maintenance can result in machine failure or permanent damage.

WARNING

DO NOT REMOVE CAPS, PLUGS OR OTHER COMPONENTS WHEN COMPRESSOR IS RUNNING OR PRESSURIZED. SEVERE PERSONAL INJURY MAY RESULT. STOP COMPRESSOR AND RELIEVE ALL INTERNAL PRESSURE BEFORE DOING SO.

4.18 DAILY OPERATION

Prior to starting the machine, it is necessary to check the oil level in the sump. Should the level be low, add the necessary amount. If the addition of oil become too frequent, a simple problem may have developed which is causing this excessive loss. See the troubleshooting section under Excessive Oil Consumption for a probable cause and remedy. Also check the linkage prior to starting.

NOTE: the radiator and engine cooling system should be drained and flushed every two years. Replace the coolant with a mixture of 50% ethylene glycol and 50% water. Do not use a leak sealing type of antifreeze. Should a 100% water solution be used, a rust inhibitor must be added.

After a routine start has been made, observe the instrument panel gauges. After the machine has warmed up, it is recommended that a general check on the overall machine and instrument panel be made to assure the compressor is running properly. Also check the air filter maintenance indicator (if supplied). Should the indicators show red, clean or replace the elements immediately. (See engine manual.)

4.19 MAINTENANCE SCHEDULE CHART

INTERVAL	REQUIRED MAINTENANCE	REFERENCE
<p>EVERY 10 HOURS OR DAILY</p>	<ol style="list-style-type: none"> 1. Check air end fluid level 2. Check radiator coolant level in coolant recovery tank 3. Check fuel supply after running 4. Check air filter maintenance indicator 5. Check for fuel, oil, air, and water leaks 6. Check battery mounting for security 7. Drain water and sediment from fuel tank 	<p>Drain at bottom of tank</p>
<p>EVERY 50 HOURS OR WEEKLY</p>	<ol style="list-style-type: none"> 1. Clean return line orifice after initial start only 2. Drain water from compressor oil reservoir More frequent draining may be required under high humidity conditions. 3. Check drawbar and two eye bolt torque (and prior to each move). 70 ft.-lb 4. Check wheel nut torque (and prior to each move) 95 ft. lb 5. Check tire pressure 32 PSI 6. Inspecting lifting frame (and before each lift) 	<p>Drain at bottom of reservoir</p>
<p>EVERY 500 HOURS</p>	<ol style="list-style-type: none"> 1. Change air end fluid and fluid filter elements 2. Check axel spring mounting bolts for tightness and damage 3. Clean battery terminals, check battery hold-downs and cables for wear 4. Check air filter piping, fittings and clamps 5. Check radiator hoses and clamps 6. Check engine and air end mounts 7. Check fan belt tension 	
<p>EVERY 1000 HOURS</p>	<ol style="list-style-type: none"> 1. Install new air filter elements (shorter interval may be necessary under dusty conditions) 2. Check all door gaskets, hinges, and latches to maintain acoustics seal 3. Drain engine radiator coolant. Clean and flush cooling system. Refill with coolant 4. Check engine and compressor shut down switches 5. Check reservoir pressure relief valve 6. Repack wheel bearings 7. Install new fuel filter and water separator elements 	

NOTICE: Check engine operator's manual for required service and service intervals.

4.20 RECOMMENDED SPARE PARTS LIST

ENGINE	JD4045	IZ4LE1
AIR FILTER ELEMENT	124-65517	124-65517
COMPRESSOR OIL FILTER ELEMENT	124-28093	124-28093
SEPERATOR AIR/OIL ELEMENT	124-91268	124-91268
ENGINE OIL FILTER ELEMENT	630-65547	632-90601
ENGINE FUEL FILTER ELEMENT	630-62545	632-90567
ENGINE FAN BELT	154-90941	303149

COMPLETE KITS ARE ALSO AVAILABLE THAT INCLUDE ALL THE ABOVE PARTS.

KIT FOR JOHN DEERE 4045 185 TO 250.....60389
KIT FOR ISUZU 4LE1 130 TO 185.....60433

4.21 PROCEDURE FOR ORDERING PARTS

Parts can be ordered directly from the factory. When ordering parts always indicate the serial number of the unit. For parts call 1-800-635-6587.

SECTION 5

5.1 TROUBLESHOOTING

If the unit will not crank when a “START” is attempted, DO NOT jump-start without first considering the following:

- If there is obvious battery damage such as a cracked or broken case, replace battery
 - Check for loose battery cables. Tighten if necessary
 - Check terminals for corrosion, clean if necessary
1. Connect the first jumper cable from positive “+” (red) terminal of the discharged battery to the positive “+” (red) terminal on the booster battery. NEVER connect “+” (red) to “-“ to black. DO NOT PERMIT vehicles to touch each other as this could establish a ground connection and counteract the benefits of this procedure.
 2. Connect one end of second jumper cable to the ground negative “-“ (black) terminal of the booster battery. Connect the other end of this jumper cable to a solid, stationary metallic point on the compressor with the discharged battery but at a point AWAY from the battery (at least 18 inches or more) if possible. DO NOT connect directly to the negative post of the discharged battery.
 3. Disconnect positive battery terminal whenever using a high rate charge. Start the compressor in accordance with normal procedure. When the engine is operating smoothly disconnect the jumper cable end at the engine block before disconnecting the jumper cables from the other position.

Your Smith Air Compressor has safety switches that protect the engine and compressor from permanent damage. The safety switches are as follows:

1. Engine Oil Pressure: This is a normally open switch that closes with 15 PSI of engine oil pressure.
2. Engine Coolant Temperature: This is a normally closed that opens a 220° F.
3. Compressor Oil Temperature: This is a normally closed switch that opens at 245°F.

All above switches are in series with the power feed to the engine fuel solenoid. If any of the switches open, power to the solenoid is lost and the engine shuts down.

WARNING

OPERATING WITHOUT SAFETY SWITCHES COULD CAUSE SEVERE PERSONAL INJURY OR DEATH AND CAUSE SIGNIFICANT PROPERTY DAMAGE. IT WILL VOID EXISTING WARRANTIES. ALWAYS INSURE THAT ALL SAFETY SYSTEMS ARE FUNCTIONAL.

5.2 TROUBLESHOOTING CHART

The information contained in the troubleshooting chart has been compiled from field report data and factory experience. It contains symptoms and usual causes for the report data and factory experience. It contains symptoms and usual causes for the described problems; however, do not assume that these are the only problems that may occur. All available data concerning the trouble should be systematically analyzed. Before undertaking any repairs or component replacement procedures, a detailed visual inspection is worth performing for almost all problems and may avoid unnecessary additional damage to the machine.

- Check for loose wiring.
- Check for damaged piping.
- Check for parts damaged by heat or an electrical short circuit, usually apparent by discoloration or a burnt odor.

Should your problem persist after making the recommended checks, consult your nearest Smith Air Compressor distributor or the Smith Air Compressor factory by calling 1-800-635-6587 or (219) 324-7776.

SYMPTOM	CAUSE	REMEDY
Machine will not crank.	Faulty battery connections	Check the battery terminals for tightness and corrosion.
	Low battery voltage	<ul style="list-style-type: none"> a. Check voltage and charge or replace the battery. b. Unit may be jump-started.
	Faulty ignition switch.	Replace the switch.
	Starter solenoid connections are loose or corroded.	Clean and tighten connections.
	Faulty starter solenoid or starter.	Repair or replace the faulty components.
Machine cranks but will not start.	No fuel	<ul style="list-style-type: none"> a. Check fuel level and add if necessary. b. If the unit has run out of fuel it may be necessary to prime the fuel system.
	Air in the fuel system.	<ul style="list-style-type: none"> a. Check fuel line connections and tighten or repair. b. Prime the fuel system.
	Defective safety bypass switch.	Replace switch.

SYMPTONS	CAUSE	REMEDY
Machine cranks but will not start (continued)	Fuel solenoid inoperative.	<ul style="list-style-type: none"> a. With ignition and safety bypass on; check for voltage at the solenoid. b. Check safety switches.
Machine shuts down with air demand present.	Out of fuel	Check fuel level and add fuel if necessary.
	Fuel filter restricted.	Change fuel filter.
	Safety shutdown switches activated.	<ul style="list-style-type: none"> a. Engine coolant level low; add coolant. b. Compressor oil and radiator flow restricted; clean coolers. c. Fan belts slipping or broken; repair or replace. d. Compressor oil low; add oil. e. Engine oil level low; add oil. f. Compressor oil filter restricted; change the filter. g. Engine oil filter restricted; change the filter.

SYMPTOM	CAUSE	REMEDY
Machine will not build up pressure.	Defective safety shutdown switch.	Check the shutdown switches.
	Thermostatic valve malfunctioning.	Clean or replace the thermostatic element.
	Defective gauge	Replace the gauge.
	Air demand too great	Check service lines for leaks or open valves.
	Blowdown valve open	<ul style="list-style-type: none"> a. Check to see if the blowdown valve is getting a pilot signal. b. Repair or service valve.
With no demand the compressor builds excessive pressure.	Faulty coupling	Replace the coupling.
	Defective gauge	Replace the gauge.
	Air cylinder not fully extending.	<ul style="list-style-type: none"> a. Check for restrictions in the control lines. b. Repair or replace control air cylinder. c. Check that the inlet valve is closing.

SYMPTOM	CAUSE	REMEDY
Insufficient air delivery	Pressure regulator not properly adjusted or faulty.	<ul style="list-style-type: none"> a. Adjust the regulator b. Repair or replace the regulator.
	Compressor undersized for the air requirement.	Recheck maximum air requirement.
	Engine speed low	Check speed and adjust as necessary.
	Air intake restricted	<ul style="list-style-type: none"> a. Check air filter for dirt and make sure the indicator is working. b. Look for obstructions in the filter and inlet piping. c. Check that the inlet valve is opening fully.
Excessive compressor oil consumption.	Faulty drive coupling	Replace the coupling
	Oil reserve over filled	Drain to the proper level.
	Leak in the compressor oil system.	Check all piping lines and connections; repair as necessary.

SYMPTOM	CAUSE	REMEDY
Compressor overheating	Oil scavenge line not removing the oil from the separator.	<ul style="list-style-type: none"> a. Check scavenge line and its check valve for restrictions; clear as necessary. b. Make sure that the scavenge line reaches the bottom of the separator.
	Separator element damaged	Replace the element
	Compressor undersized for the air requirement	Operating at low pressures increases the oil carry over; recheck the load requirements
	Unit being operating in an area with limited fresh air.	Reposition the unit or open up the confinement.
	Fan belts are loose or broken.	Tighten or replace
	Dirt build up on the coolers.	Clean the cooler thoroughly. Be careful not to damage the fins.
	Compressor level low	Check and fill to proper level.
Compressor oil filter dirty.	Replace the filter.	

SYMPTOM	CAUSE	REMEDY
High fuel consumption	Thermostatic valve malfunctioning.	Clean or replace the element.
	Restriction in the compressor oil lines.	Clean or replace the lines.
	Restriction inside the oil cooler.	Clean internal tubes of the cooler.
	Operating the compressor with the hood open.	Close the hood.
	Coolant level low.	Add coolant to the proper level.
	Leaks in the fuel system.	Check all the fuel lines and connections; repair or replace as necessary.
	Engine not at correct operating speed	Adjust the engine to its proper speed.
	Pressure to regulator set too high.	Adjust regulator to correct pressure for the unit.
	Engine air intake is restricted.	Inspect the air intake system checking for any restriction; clean repair or replace as necessary.
Incorrect injection timing.	Adjust to specifications in the engine manual.	

WARRANTY

Boss Industries, Inc. (BOSS) warrants that this Rotary Screw Compressor unit conforms to applicable drawings and specifications approved in writing by BOSS. The unit assembly will be free from defects in material and workmanship for a period of three (3) years from the date of initial operation or forty-two (42) months from the date of shipment, whichever period first expires. All other components and parts of BOSS manufacture will be free from defects in material and workmanship for a period of one (1) year from the date of initial operation or eighteen (18) months from the date of shipment, whichever period first expires. If within such period BOSS receives from the Buyer written notice of and alleged defect in or nonconformance of the unit, all other components and parts of BOSS manufacture and if in the judgment of BOSS these items do not conform or are found to be defective in material or workmanship, BOSS will at its option either, (a) furnish a Service Representative to correct defective workmanship, or (b) upon return of the item F.O.B. BOSS original shipping point, repair or replace the item or issue credit for the replacement item ordered by Buyer, (Defective material must be returned within thirty (30) days of return shipping instructions from BOSS. Failure to do so within specified time will result in forfeiture of claim), or (c) refund the full purchase price for the item without interest. Factory installed units will also include warranty on installation for a period of one (1) year. This warranty does not cover damaged caused by accident, misuse or negligence. If the compressor unit is disassembled the warranty is void. BOSS's sole responsibility and Buyer's exclusive remedy hereunder is limited to such repair, replacement, or repayment of the purchase price. Parts not of BOSS manufacture are warranted only to the extent that they are warranted by the original manufacture. BOSS shall have no responsibility for any cost or expense incurred by Buyer from inability of BOSS to repair under said warranty when such inability is beyond the control of BOSS or caused solely by Buyer.

There are no other warranties, express, statutory or implied, including those of merchantability and of fitness of purpose; nor any affirmation of fact or representation that extends beyond the description of the face hereof.

This warranty shall be void and BOSS shall have no responsibility to repair, replace, or repay the purchase price of defective or damaged parts or components resulting directly or indirectly from the use of repair or replacement parts not of BOSS manufacture or approved by BOSS or from Buyer's failure to store, install, maintain, and operate the compressor according to the recommendations contained in the Operating and Parts Manual and good engineering practice. The total responsibility of BOSS for claims, losses, liabilities or damages, whether in contract or tort, arising out of or related to its products shall not exceed the purchase price. In no event shall BOSS be liable for any special, indirect, incidental or consequential damages of any character, including, but not limited to, loss of use of productive facilities or equipment, loss of profits, property damage, expenses incurred in reliance on the performance of BOSS, or lost production, whether suffered by Buyer or any third party.

BOSS INDUSTRIES, INC.
1761 GENESIS DR. LAPORTE, IN 46350
(219) 324-7776 Phone
(219) 324-7470 Fax

SUMMARY OF MAIN WARRANTY PROVISIONS

As claims, policies and procedures are governed by the terms of the BOSS Industries, Inc. (BOSS) warranty, it is necessary to outline some of the more important provisions.

The BOSS warranty applies only to new and unused products, which, after shipment from the factory, have not been altered, changed, repaired or mistreated in any manner whatsoever. Normal maintenance items such as lubricants and filters are not warrantable items.

Parts not of BOSS manufacture are warranted only to the extent they are warranted by the original manufacturer.

Damage resulting from abuse, neglect, misapplication or overloading of a machine, accessory or part is not covered under warranty.

Deterioration or wear occasioned by chemical and/or abrasive action or excessive heat shall not constitute defects.

Parts replacement and/or correction of defective workmanship will normally be handled by BOSS Industries, Inc. or their authorized distributor.

Failure to file a detailed warranty claim/service report for each occurrence of material defect of defective workmanship will cause warranty claim to be rejected.

Defective material must be returned within 30 days of receipt of shipping instructions. Failure to do so within specified time will result in forfeiture of claim.

The distributor is responsible for the initial investigation and write up of the warranty claim.

Distributor shall be allowed no more than 30 days from date of repair to file a warranty claim/service report.

Warranty for failure of BOSS replacement parts covers the net cost of the part only, not labor and mileage.

The BOSS warranty does not cover diagnostic calls and travel. That is time spent traveling to the machine to analyze the problem and returning with the proper tools and parts to correct the problem.

Boss will deduct from allowable credits for excess freight caused by sender failing to follow return shipping instructions.

Distributors or end-user automatically deducting the value of a warranty claim from outstanding balances due and payable to BOSS prior to receiving written notification of BOSS approval of the warranty claim may be subject to forfeiture of the entire claim.

WARRANTY INTRODUCTION

The warranty policy and procedures outlined here within are detailed to provide the claimant with the information necessary when filing a warranty claim, and enabling BOSS the ability to serve it's customers best.

WARRANTY CLAIMS - GENERAL

An approved claim depends on the following provision:

1. A warranty claim/service report # must be issued by BOSS. (See filing procedures).
2. Failed part must be returned within 30 days, freight prepaid, with receipt of warranty claim/service report.
3. Part is definitely defective.
4. Workmanship is definitely defective.
5. Machine is within warranty period.
6. Machine has been operating within design conditions.

Claims made by distributors must be verified by distributor prior to contacting BOSS.

WARRANTY CLAIMS - INSTRUCTIONS FOR SUBMITTING CLAIM

When making a warranty claim, study the situation that led up to the failure carefully. Verify that the failure was not the result of abuse or negligence. Warranty claims are not considered under normal machine maintenance.

WARRANTY CLAIMS - FILING PROCEDURES

1. Initiate through purchase order for warranty part or request for credit.
2. Warranty Claims/Service Report will accompany replacement part. When returning failed part to the factory for warranty credit, fill out all information requested on Warranty Claims/Service Report when it is returned to you with replacement part.
3. BOSS will confirm disposition of failed part within 30 days, and or request additional information.
4. Claim acceptance or denial will result in release of a credit or confirmation letter of denial.
5. BOSS will consider each claim on it's own merit and reserves the right to accept or reject claim request. In case of air-ends, these will be returned to the manufacturer for their analysis/input.
6. Send Warranty Claim/Service Report request to:

BOSS INDUSTRIES, INC.
1761 GENESIS DRIVE
LAPORTE, IN 46350
ATTN: WARRANTY CLAIM ENCLOSED

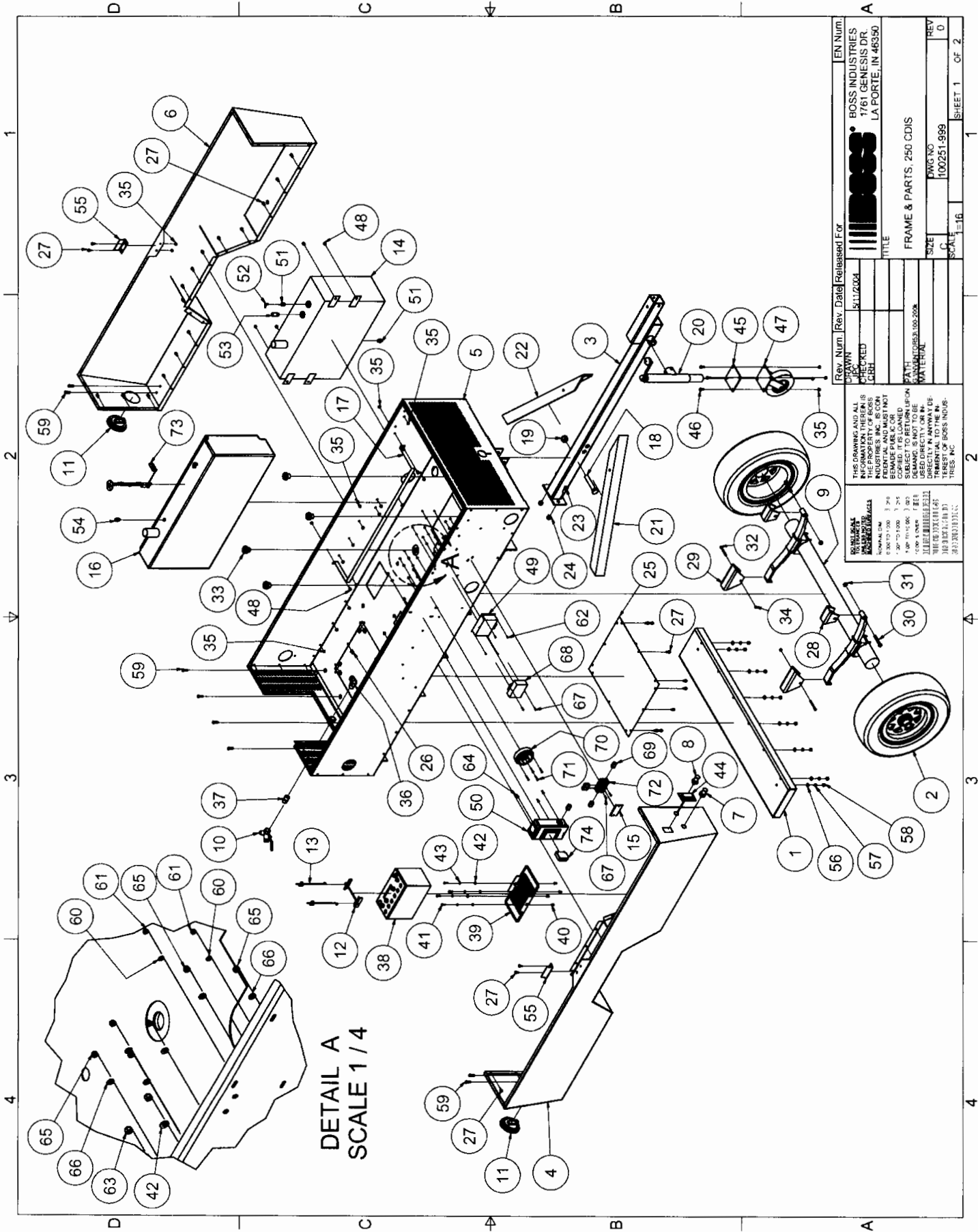
WARRANTY CLAIMS - PREPARATION OF PART FOR RETURN

Parts returned to the factory must be properly packaged to prevent damage during shipment. Damage to a part as a result of improper handling or packing could be cause for claims disallowance of credit. When addressing the package for shipment, the following information must be on outside of or tagged clearly to package.

1. Return Goods authorization.
2. Distributor or end-users return address.
3. Correct factory address.
4. Warranty Claim/Service Report #.
5. Number of packages pertaining to each claim.

NOTE: Our warranty requires that all defective parts be returned to BOSS freight prepaid. Items sent without RGA number will not be accepted.

NOTES



DETAIL A
SCALE 1/4

Rev. Num	Rev. Date	Released For	EN Num
1	5/11/2004	DRAWN	BOSS INDUSTRIES
2		CHECKED	1761 GENESIS DR.
3		CRH	LA PORTE, IN 46350
TITLE			
PARTS LIST			
FAH			FRAME & PARTS, 250 CDS
MATERIAL			
SIZE	DWG NO	REV	D
C	100251-999	D	0
SCALE	1-16	SHEET 1	OF 2

THIS DRAWING AND ALL INFORMATION THEREIN IS THE PROPERTY OF BOSS INDUSTRIES, INC. IT IS TO BE KEPT CONFIDENTIAL AND MUST NOT BE MADE PUBLIC OR REPRODUCED IN ANY MANNER WITHOUT THE WRITTEN PERMISSION OF BOSS INDUSTRIES, INC.

REQUIREMENTS:
 1. 250 CDS
 2. 250 CDS
 3. 250 CDS
 4. 250 CDS
 5. 250 CDS
 6. 250 CDS
 7. 250 CDS
 8. 250 CDS
 9. 250 CDS
 10. 250 CDS
 11. 250 CDS
 12. 250 CDS
 13. 250 CDS
 14. 250 CDS
 15. 250 CDS
 16. 250 CDS
 17. 250 CDS
 18. 250 CDS
 19. 250 CDS
 20. 250 CDS
 21. 250 CDS
 22. 250 CDS
 23. 250 CDS
 24. 250 CDS
 25. 250 CDS
 26. 250 CDS
 27. 250 CDS
 28. 250 CDS
 29. 250 CDS
 30. 250 CDS
 31. 250 CDS
 32. 250 CDS
 33. 250 CDS
 34. 250 CDS
 35. 250 CDS
 36. 250 CDS
 37. 250 CDS
 38. 250 CDS
 39. 250 CDS
 40. 250 CDS
 41. 250 CDS
 42. 250 CDS
 43. 250 CDS
 44. 250 CDS
 45. 250 CDS
 46. 250 CDS
 47. 250 CDS
 48. 250 CDS
 49. 250 CDS
 50. 250 CDS
 51. 250 CDS
 52. 250 CDS
 53. 250 CDS
 54. 250 CDS
 55. 250 CDS
 56. 250 CDS
 57. 250 CDS
 58. 250 CDS
 59. 250 CDS
 60. 250 CDS
 61. 250 CDS
 62. 250 CDS
 63. 250 CDS
 64. 250 CDS
 65. 250 CDS
 66. 250 CDS
 67. 250 CDS
 68. 250 CDS
 69. 250 CDS
 70. 250 CDS
 71. 250 CDS
 72. 250 CDS
 73. 250 CDS
 74. 250 CDS

Parts List				Parts List			
ITEM	QTY	PART NUMBER	DESCRIPTION	ITEM	QTY	PART NUMBER	DESCRIPTION
1	1	302336	BUMPER, 250-CDIS	45	1	303481	PLATE, MTG SEMI-PNEUMATIC THIRD WHEEL
2	2	127-91011	TIRE-WHEEL, 2540 LB 6 ON 5.5	46	4	929705-100	BOLT, WHIZLOCK GR5 5/16-18 X 1
3	1	158-90589	DRAWBAR, 185-210 BLACK (REV A)	47	1	120-62114	WHEEL SEMI PNEUMATIC
4	1	302301	FENDER, WITH TOOL BOX RH (REV 1)	48	6	929705-050	BOLT, WHIZLOCK GR5 5/16-18 X 1/2
5	1	302299	FRAME, 250 CDIS (REV-4)	49	1	302256	REG. VOLTAGE PMVR120-B FABCO
6	1	302302	FENDER, W/TOOL BOX LH (REV-2)	50	1	303933	BOX, CIRCUIT BREAKER 60AMP 2 SLOT
7	1	302349	TERMINAL, BATTERY JUMPER BLACK	51	2	907602-010	BUSHING, RED 1/2 X 1/4 GAL
8	1	302348	TERMINAL, BATTERY JUMPER RED	52	1	970304-025	ELBOW, HYD 1/4 BARB X 1/4 MNPT
9	1	157-90932	AXLE, 4000LB 6 LUG OVER SLUNG	53	1	922808-020	NIPPLE, PIPE HALF 1/2 X 2 SCH40
10	1	125-18146	VALVE, SERVICE 1 X 3/4-Y VENTED	54	1	303223	ADAPTER, OIL DRAIN FORD 2.5L
11	2	60572-999	KIT, TAIL LIGHT-GROMMET&PLUG	55	2	302300-11	CANOPIY, SIDE DOOR STRIKER (REV 1)
12	1	120-14966	BRACKET, BATTERY HOLD DOWN	56	8	938207-071	WASHER, FLAT GR8 7/16
13	2	120-28804	BOLT, BATTERY HOLD DOWN	57	8	937807-109	WASHER, LOC GR8 7/16
14	1	302460	TANK, FUEL 23 GALLON 250 CDIS (REV 2)	58	8	926007-385	NUT, HEX GR8 7/16-14
15	1	302541	COVER, HANDY BOX STEELCITY 58C1	59	8	929807-125	BOLT, HEX GR8 7/16-14 X 1 1/4
16	1	158-90513	FUEL TANK PLASTIC 30 GA.	60	4	937201-045	WASHER, FLAT GR2 #6
17	1	158-90514	FUEL TANK STRAP	61	4	973700-063	NUT, HEX NYLOC GR2 #6-32
18	1	929116-550	BOLT, HEX GR5 1-8 X 5 1/2	62	4	931600-050	SCREW, MACH RD HD #6-32 X 1/2
19	1	925516-513	NUT, NYLOC GR8 1-8	63	3	924304-145	NUT, NYLOC GR5 1/4-20
20	1	120-65742	JACKSTAND, ADJ 3RD (POLY WHEEL)	64	3	929104-075	BOLT, HEX GR5 1/4-20 X 3/4
21	1	302456	ANGLE, DRAWBAR SUPPORT RH	65	8	924301-130	NUT, NYLOC GR5 #10-32
22	1	302457	250 CDIS (REV 1)	66	8	938602-049	WASHER, FLAT GR5 #10
23	2	929110-150	ANGLE, DRAWBAR SUPPORT LH	67	4	931702-075	SCREW, MACH RD HD #10-32 X 3/4
24	2	925510-329	250 CDIS (REV 1)	68	1	302346	CHARGER, BATTERY 12V 1.5AMP
25	1	302299-13	BOLT, HEX GR5 5/8-11 X 1 1/2	69	5	300565-050	CONNECTOR, 1/2 CONDUIT PL GEN
26	12	961505-140	NUT, NYLOC GR8 5/8-11	70	1	302373	SWITCH, BATTERY ON/OFF
27	54	929705-075	FRAME, DRYER BOTTOM COVER	71	4	931702-150	SCREW, MACH RD HD #10-32 X 1 1/2
28	2	302338	NUT, TINNEMAN 5/16-18	72	1	302540	BOX, HANDY RAGO 650
29	2	302337	BOLT, WHIZLOCK GR5 5/16-18 X 3/4	73	1	302382	SENDER, FUEL VERIZON
30	2	120-21199	SHACKLES, SPRING REAR (REV 1)	74	1	301751-030	BREAKER, 30 AMP 120V GFI CIRCUIT SIEMENS
31	2	924909-387	SHACKEL, FRONT JD02	75	4.5 FT	300524-038	HOSE, 3/8" ID FUEL LINE (NOT SHOWN)
32	2	120-21954	SCREW, 9/16-18 UNF X 3.46 LG	76	4.5 FT	300524	HOSE, 1/4 ID FUEL LINE (NOT SHOWN)
33	4	104-90001	NUT, HEX GR8 9/16-18	77	1	301861	CLAMP, HOSE 1/4" (NOT SHOWN)
34	2	925505-273	MOUNT, SHOCK REAR M1212	78	1	302383	GASKET, FUEL LEVEL SENDER 3023 (NOT SHOWN)
35	52	925305-283	NUT, NYLOC GR8 5/16-18	79	25 FT	300216-050	LOOM, 1/2 POLY (NOT SHOWN)
36	1	960216-100	NUT, WHIZ LOCK 5/16-18				
37	1	922116-020	ELBOW, HYD 1 MJIC X 1 MNPT				
38	1	302303	NIPPLE, PIPE 1 X 2 GAL SCH40				
39	1	150-90793	BATTERY, GEL 650-CCA 250 CDIS				
40	4	120-36992	TRAY, BATTERY LARGE, 14X8				
41	4	929104-100	INSERT, 1/4-20UNC AKS4-420-165				
42	7	938604-071	BOLT, HEX GR5 1/4-20 X 1				
43	4	938004-062	WASHER, FLAT GR5 1/4				
44	1	302223	WASHER, LOC GR5 1/4				
			COVER, RCPTCL 1GNG WP 120V15AMP				

Rev. Num. | Rev. Date | Released For

54112004

BOSS INDUSTRIES

1761 GENESIS DR.

LA PORTE, IN 46350

EN Num.

0

SHEET 2 OF 2

BOSS

FRAME & PARTS, 250 CDIS

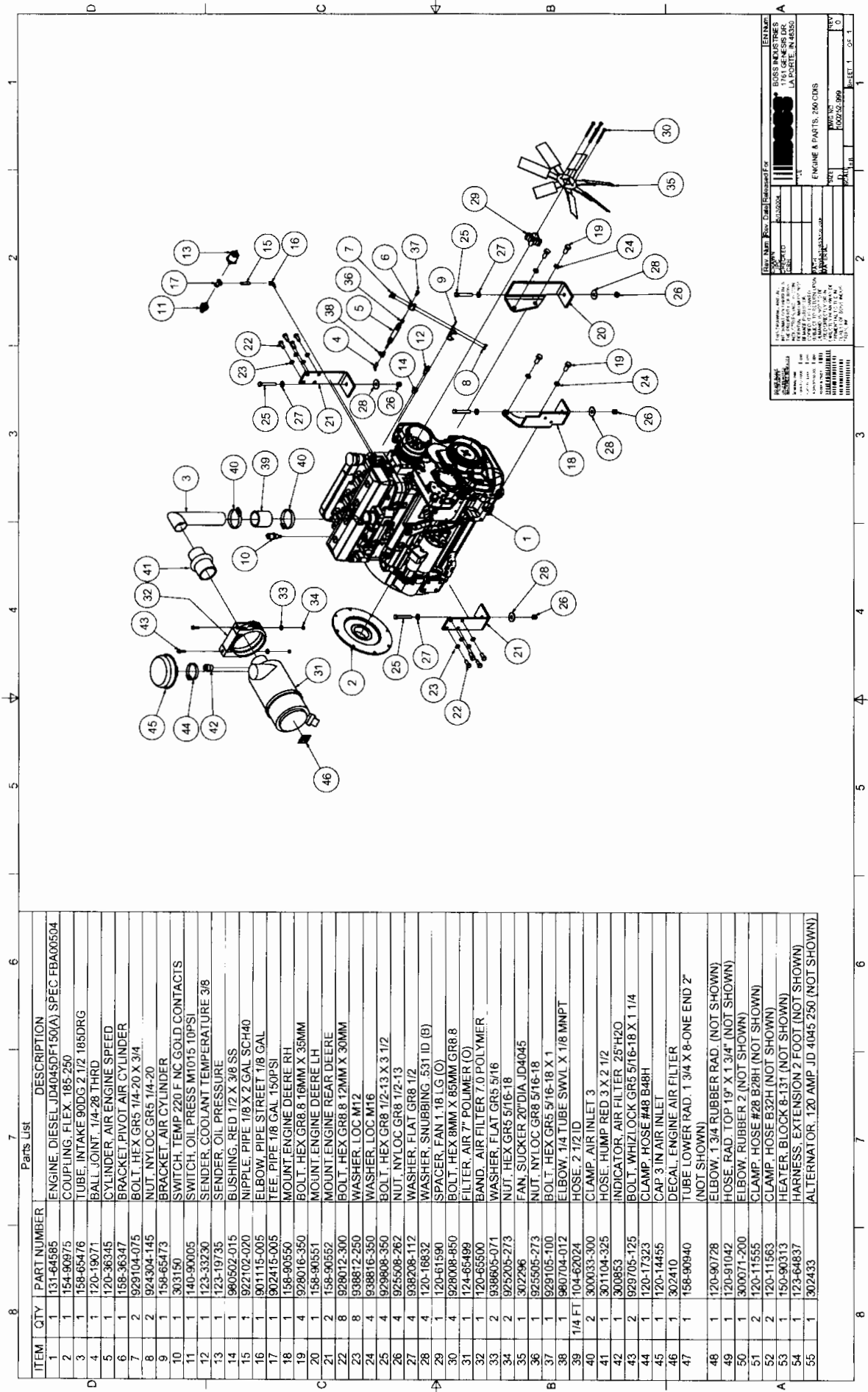
SIZE

SCALE

DWG NO

100251-999

THIS DRAWING AND ALL INFORMATION THEREIN IS THE PROPERTY OF BOSS INDUSTRIES, INC. AND MUST NOT BE REPRODUCED OR TRANSMITTED IN ANY FORM OR BY ANY MEANS, ELECTRONIC OR MECHANICAL, INCLUDING PHOTOCOPYING, RECORDING, OR BY ANY INFORMATION STORAGE AND RETRIEVAL SYSTEM. SUBJECT TO RETURN UPON DEMAND. IS NOT TO BE USED FOR ANY OTHER PROJECT WITHOUT THE WRITTEN PERMISSION OF BOSS INDUSTRIES, INC.

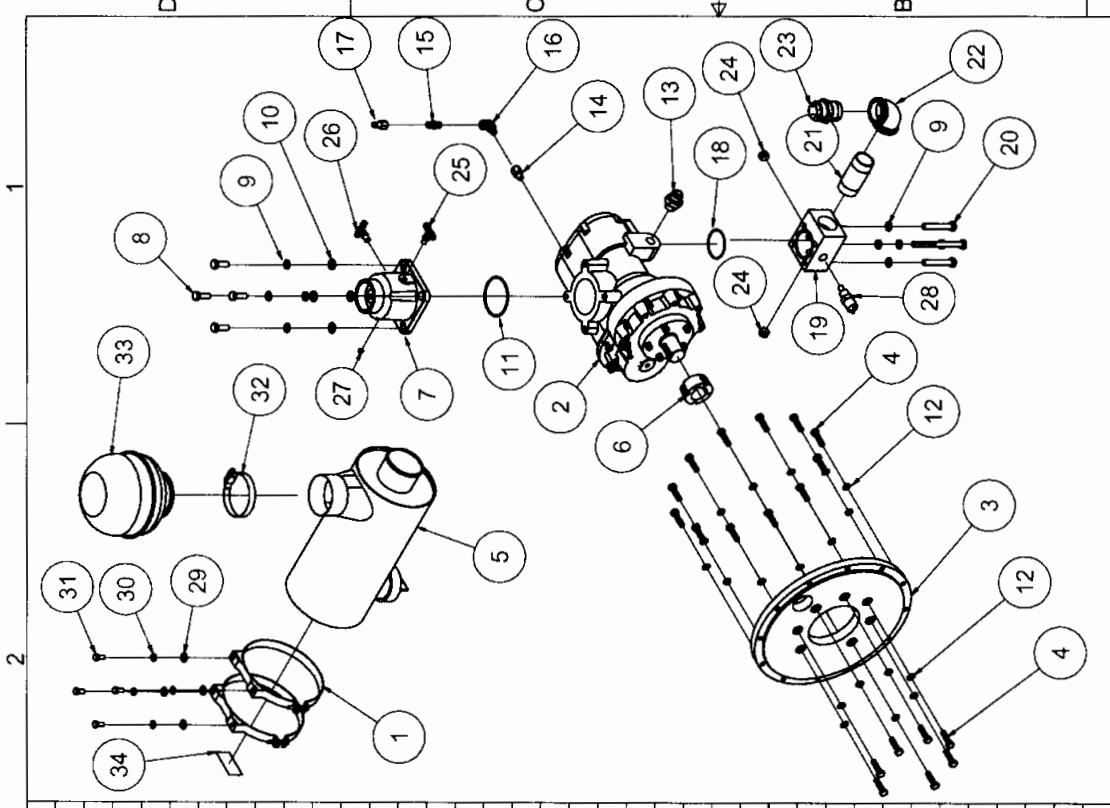


ITEM	QTY	PART NUMBER	DESCRIPTION
1	1	131-64585	ENGINE, DIESEL JD4045DF150(A), SPEC FBA00504
2	1	154-90875	COUPLING, FLEX, 185, 250
3	1	158-65476	TUBE, INTAKE 90DG 2 1/2 185DRG
4	1	120-19071	BALL JOINT 1/4-28 THRD
5	1	120-36345	CYLINDER, AIR ENGINE SPEED
6	1	158-36347	BRACKET, PIVOT AIR CYLINDER
7	2	929104-075	BOLT, HEX GR5 1/4-20 X 3/4
8	2	924304-145	NUT, NYLOC GR5 1/4-20
9	1	158-65473	BRACKET, AIR CYLINDER
10	1	303150	SWITCH, TEMP 220 F NC GOLD CONTACTS
11	1	140-90005	SWITCH, OIL PRESS M1015 10PSI
12	1	123-33230	SENDER, COOLANT TEMPERATURE 3/8
13	1	123-19735	SENDER, OIL PRESSURE
14	1	960502-015	BUSHING, RED 1/2 X 3/8 SS
15	1	922102-020	NIPPLE, PIPE 1/8 X 2 GAL SCH40
16	1	901115-005	ELBOW, PIPE STREET 1/8 GAL
17	1	902415-005	TEE, PIPE 1/8 GAL 150PSI
18	1	158-90550	MOUNT, ENGINE DEERE RH
19	4	929016-350	BOLT, HEX GR8 16MM X 35MM
20	1	158-90551	MOUNT, ENGINE DEERE LH
21	2	158-90552	MOUNT, ENGINE REAR DEERE
22	8	928012-300	BOLT, HEX GR8 8 12MM X 30MM
23	8	938812-250	WASHER, LOC M12
24	4	938816-350	WASHER, LOC M16
25	4	929908-350	BOLT, HEX GR8 1/2-13 X 3 1/2
26	4	925508-262	NUT, NYLOC GR8 1/2-13
27	4	938208-112	WASHER, FLAT GR8 1/2
28	4	120-16832	SPACER, FAN 1 1/8 (G.O)
29	1	120-61590	BOLT, HEX 8MM X 85MM GR8 8
30	4	928008-850	BAND, AIR FILTER 7.0 POLYMER
31	1	124-65489	FILTER, AIR 7" POLYMER (O)
32	1	120-65500	WASHER, FLAT GR5 5/16
33	2	938605-071	NUT, HEX GR5 5/16-18
34	2	925205-273	FAN, SUCKER 20" DIA, JD4045
35	1	302296	NUT, NYLOC GR8 5/16-18
36	1	925505-273	ELBOW, 1/4 TUBE SWVL X 1/8 MNPT
37	1	929105-100	HOSE, 2 1/2 ID
38	1	960704-012	CLAMP, AIR INLET 3
39	1/4 FT	104-62024	HOSE, HUMP RED 3 X 2 1/2
40	2	300033-300	INDICATOR, AIR FILTER 25"H2O
41	1	301104-325	BOLT, WHIZLOCK GR5 5/16-18 X 1 1/4
42	1	300853	CLAMP, HOSE #48 B48H
43	2	929705-125	CAP 3 IN AIR INLET
44	1	120-17323	DECAL, ENGINE AIR FILTER
45	1	120-14455	TUBE LOWER RAD, 1 3/4 X 8-ONE END 2" (NOT SHOWN)
46	1	302410	ELBOW, 1 3/4 RUBBER RAD. (NOT SHOWN)
47	1	158-90940	HOSE, RAD. TOP 19" X 1 3/4" (NOT SHOWN)
48	1	120-90728	ELBOW, RUBBER 2 (NOT SHOWN)
49	1	120-91042	CLAMP, HOSE #28 B28H (NOT SHOWN)
50	1	300071-200	CLAMP, HOSE #32H (NOT SHOWN)
51	2	120-11555	CLAMP, HOSE #28 B28H (NOT SHOWN)
52	2	120-11563	CLAMP, HOSE #32H (NOT SHOWN)
53	1	150-90313	HEATER, BLOCK 8-131 (NOT SHOWN)
54	1	123-64837	HARNES, EXTENSION 2 FOOT (NOT SHOWN)
55	1	302433	ALTERNATOR, 120 AMP JD 4045 250 (NOT SHOWN)

ESTIMATE NO. _____
 BOSS INDUSTRIES
 10000 BOSS BLVD
 LA POSTOLLE, IN 46355
 PHONE (317) 438-1111
 FAX (317) 438-1112
 WWW.BOSSINDUSTRIES.COM

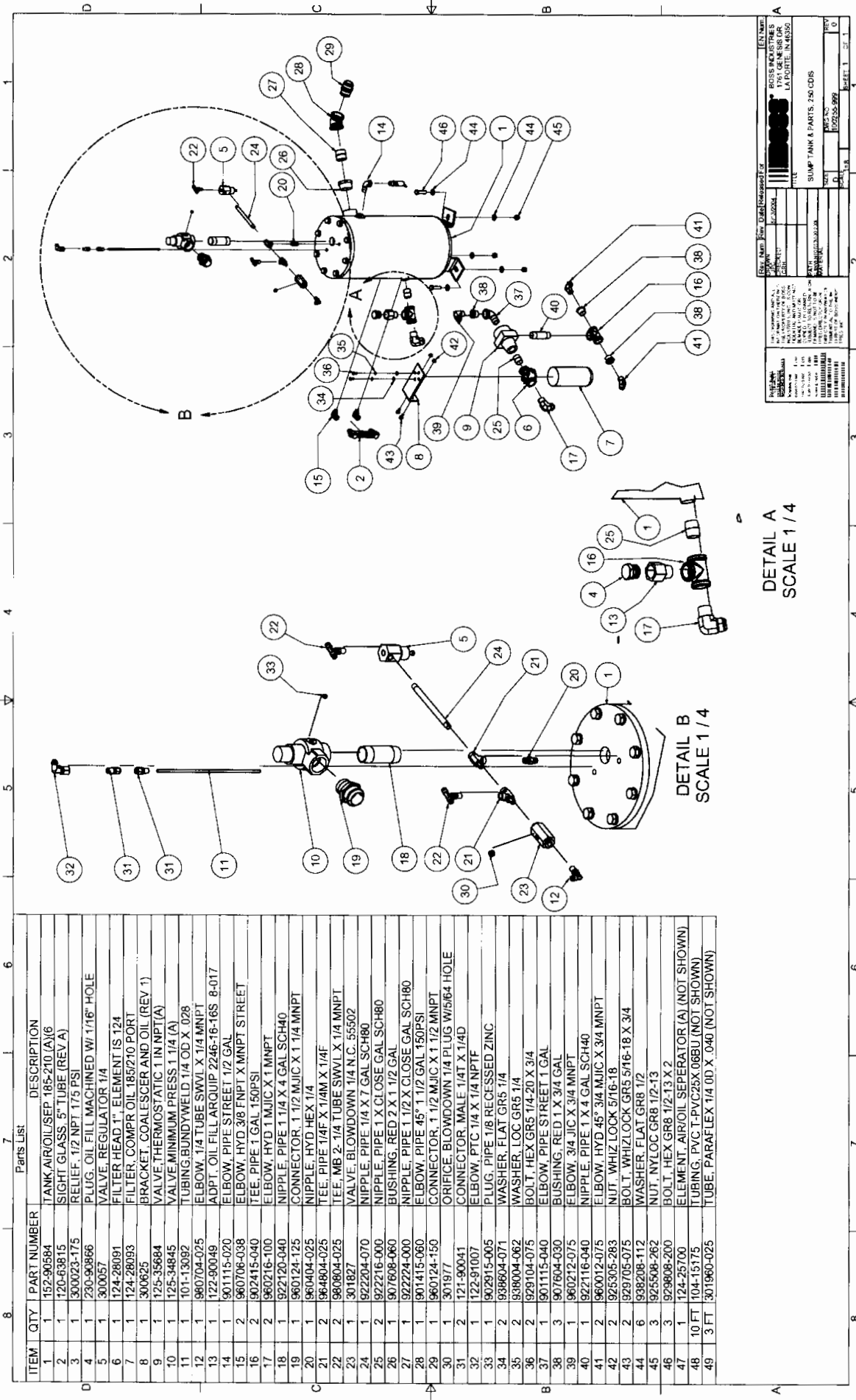
ENGINE & PARTS, 240 CDS
 PART NO. _____
 QTY _____
 PRICE _____
 TOTAL _____
 DATE _____
 SALES REP. _____
 SALES OFF. _____
 SALES TEL. _____
 SALES FAX _____
 SALES E-MAIL _____
 SALES WEB _____
 SALES ADDRESS _____
 SALES CITY _____
 SALES STATE _____
 SALES ZIP _____
 SALES COUNTRY _____
 SALES PHONE _____
 SALES FAX _____
 SALES E-MAIL _____
 SALES WEB _____

SHEET 1 OF 1



ITEM	QTY	PART NUMBER	DESCRIPTION
1	2	300343	BAND, SUMP MTG 8
2	1	302707-305	AIREND, SCA10G 58/19 3.05:1 RATIO (REV 0)
3	1	302244	ADAPTER, SAE #4 MTG FLANGE (REV 1)
4	19	929210-400	BOLT, HEX 10MM X 40MM GR 10.9
5	1	150-90064	FILTER, AIR M1657 (A)
6	1	120-90607	BUSHING, #2012 40MM STEEL
7	1	300036	VALVE, INLET CTL (REV 1)
8	4	929212-350	BOLT, HEX 12MM X 35MM GR 10.9
9	8	938812-250	WASHER, LOC M12
10	4	938912-200	WASHER, FLAT M12
11	1	926102-238	O-RING, INLET VALVE 8060
12	19	938810-220	WASHER, LOC M10
13	1	973112-075	CONNECTOR, 3/4 JIC X 3/4 BSPP
14	1	970804-025	ADAPTER, 1/4 MBSPP X 1/4 FNPT
15	1	125-28354	VALVE, CHECK 1/4 NPT
16	1	960704-025	ELBOW, HYD 1/4 FNPT X MNPT STREET
17	1	122-91008	CONNECTOR, STRAIGHT PTC 1/4 X 1/4 NPTF
18	1	926102-145	O-RING, DISCHARGE BLOCK 8060 T10G
19	1	301703	FLANGE, DISCHARGE T10G (REV 1)
20	4	929212-800	BOLT, HEX 12MM X 80MM GR 10.9
21	1	922124-040	NIPPLE, PIPE 1 1/2 X 4 GAL SCH40
22	1	901515-060	ELBOW, PIPE 1 1/2 GAL 150PSI
23	1	960124-150	CONNECTOR, 1 1/2 MJIC X 1 1/2 MNPT
24	2	902915-020	PLUG, PIPE 1/2 RECESSED ZINC
25	1	980804-012	TEE, MB 2- 1/4 TUBE SWVL X 1/8 MNPT
26	1	980804-025	TEE, MB 2- 1/4 TUBE SWVL X 1/4 MNPT
27	1	902915-005	PLUG, PIPE 1/8 RECESSED ZINC
28	1	303104	SWITCH, TEMP 245F NC 1/2 NPT GOLD CONTACTS
29	4	938206-071	WASHER, FLAT GR8 3/8
30	4	937806-094	WASHER, LOC GR8 3/8
31	4	929806-075	BOLT, HEX GR8 3/8-16 X 3/4
32	1	120-17324	CLAMP, HOSE # 56 B 56 H
33	1	302375	HOOD, AIR INLET 3 3/4 -OD METAL
34	1	302402	DECAL, COMPR AIR FILTER
35	3 FT	301960-025	TUBE, PARAFLEX 1/4 OD X .040 (NOT SHOWN)
36	3 FT	301785-300	HOSE, AIR INLET 3" KFLEX (NOT SHOWN)

<p>THIS DRAWING AND ALL INFORMATION THEREIN IS THE PROPERTY OF BOSS INDUSTRIES. IT IS UNLAWFUL TO REPRODUCE, FURNISH, OR DISCLOSE THIS DRAWING OR INFORMATION TO ANY OTHER PERSON WITHOUT THE WRITTEN PERMISSION OF BOSS INDUSTRIES.</p>	<p>Rev. Num. 5/13/2004 DRAWN: [blank] CHECKED: [blank] CDR: [blank]</p>	<p>EN Num. [blank] BOSS INDUSTRIES 1761 GENESIS DR. LA PORTE, IN 46350</p>
<p>REWORK PUBLIC OR DEMAND TO RETURN UPON RECEIPT OF THIS DRAWING. DEMAND IS NOT TO BE RETURNED TO THE ORIGINAL DRAWING OR TO THE ORIGINAL DRAWING.</p>	<p>TITLE COMPRESSOR & PARTS, 250 CDS</p>	<p>REV 0</p>
<p>SIZE 100253-999</p>	<p>SCALE 1=8</p>	<p>SHEET 1 OF 1</p>

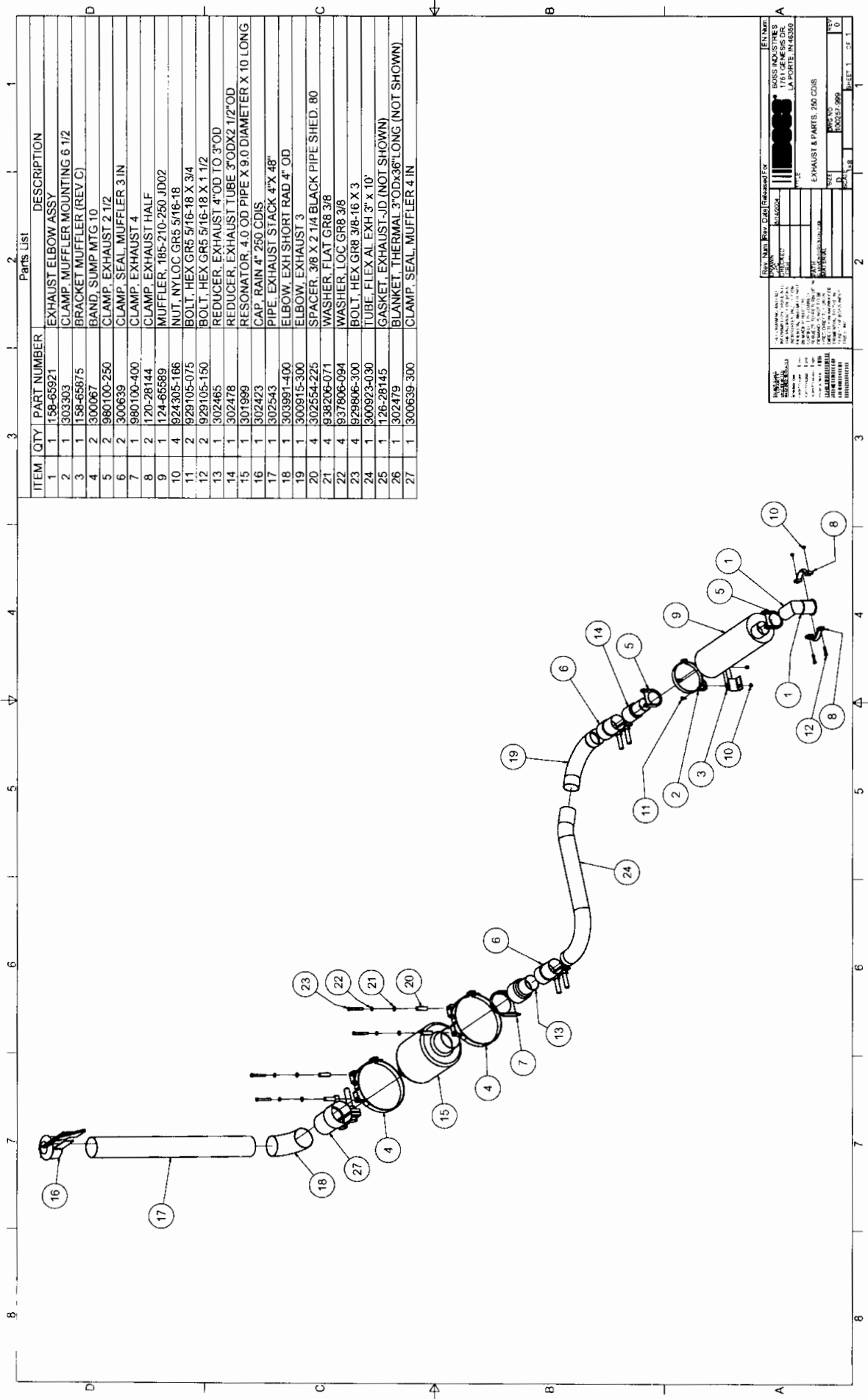


ITEM	QTY	PART NUMBER	DESCRIPTION
1	1	152-90584	TANK, AIR/OIL/SEP. 185-210 (A) V6
2	1	120-63815	SIGHT GLASS, 5" TUBE (REV A)
3	1	300023-175	RELIEF, 1/2 NPT 175 PSI
4	1	230-90866	PLUG, OIL FILL MACHINED W/1/16" HOLE
5	1	300057	VALVE, REGULATOR 1/4"
6	1	124-28091	FILTER HEAD, 1" ELEMENT IS 124
7	1	124-28093	FILTER, COMPR OIL 185/210 PORT
8	1	300925	BRACKET, COALESCE AND OIL (REV 1)
9	1	125-35684	VALVE, MINIMUM PRESS 1 1/4 (A)
10	1	101-13092	TUBING, BUNDYWELD 1/4 OD X .028
11	1	980704-025	ELBOW, 1/4 TUBE SWVL X 1/4 MNPT
12	1	122-90049	ADPT. OIL FILL ARQUIP 2246-16-16S 8-017
13	1	901115-020	ELBOW, PIPE STREET 1/2 GAL
14	1	960706-038	ELBOW, HYD 3/8 FNPT X MNPT STREET
15	2	902415-040	TEE, PIPE 1 GAL 150PSI
16	2	960216-100	ELBOW, HYD 1 MJC X 1 MNPT
17	2	922120-040	NIPPLE, PIPE 1 1/4 X 4 GAL SCH40
18	1	960124-125	CONNECTOR, 1 1/2 MJC X 1 1/4 MNPT
19	1	960404-025	NIPPLE, HYD, HEX 1/4"
20	2	964804-025	TEE, PIPE 1/4" X 1/4" X 1/4"
21	2	980604-025	TEE, MB 2-1/4 TUBE SWVL X 1/4 MNPT
22	2	301827	VALVE, BLOWDOWN 1/4 N.C. 55502
23	1	922204-070	NIPPLE, PIPE 1/4 X 7 GAL SCH80
24	1	907608-060	BUSHING, RED 2 X 1 1/2 GAL
25	2	922216-000	NIPPLE, PIPE 1 X CLOSE GAL SCH80
26	1	907608-060	BUSHING, RED 2 X 1 1/2 GAL
27	1	922224-000	NIPPLE, PIPE 1 1/2 X CLOSE GAL SCH80
28	1	901415-060	ELBOW, PIPE 45° 1 1/2 GAL 150PSI
29	1	960124-150	CONNECTOR, 1 1/2 MJC X 1 1/2 MNPT
30	1	301977	ORIFICE, BLOWDOWN 1/4 PLUG W/5/64 HOLE
31	2	121-90041	CONNECTOR, MALE 1/4T X 1/4D
32	1	122-91007	ELBOW, PTC 1/4 X 1/4 NPTF
33	1	902915-005	PLUG, PIPE 1/8 RECESSED ZINC
34	2	938604-071	WASHER, FLAT GR5 1/4
35	2	938004-062	WASHER, LOC GR5 1/4
36	2	929104-075	BOLT, HEX GR5 1/4-20 X 3/4
37	1	901115-040	ELBOW, PIPE STREET 1 GAL
38	3	907604-030	BUSHING, RED 1 X 3/4 GAL
39	1	960212-075	ELBOW, 3/4 JIC X 3/4 MNPT
40	1	922116-040	NIPPLE, PIPE 1 X 4 GAL SCH40
41	2	960012-075	ELBOW, HYD 45° 3/4 MJC X 3/4 MNPT
42	2	925305-283	NUT, WHIZ LOCK 5/16-18
43	2	929705-075	BOLT, WHIZ LOCK GR5 5/16-18 X 3/4
44	6	938208-112	WASHER, FLAT GR8 1/2
45	3	925508-262	NUT, NYLOC GR8 1/2-13
46	3	929808-200	BOLT, HEX GR8 1/2-13 X 2
47	1	124-25700	ELEMENT, AIR/OIL SEPARATOR (A) (NOT SHOWN)
48	10 FT	104-15175	TUBING, PVC T-PVC25X.06BU (NOT SHOWN)
49	3 FT	301960-025	TUBE, PARAFLEX 1/4 OD X .040 (NOT SHOWN)

REVISED
 1791 GR N 898 GR
 LA PORTE, IN 46350
 SUMP TANK & PARTS, 236 CDS
 152-90584
 152-90584-001
 152-90584-002
 152-90584-003
 152-90584-004
 152-90584-005
 152-90584-006
 152-90584-007
 152-90584-008
 152-90584-009
 152-90584-010
 152-90584-011
 152-90584-012
 152-90584-013
 152-90584-014
 152-90584-015
 152-90584-016
 152-90584-017
 152-90584-018
 152-90584-019
 152-90584-020
 152-90584-021
 152-90584-022
 152-90584-023
 152-90584-024
 152-90584-025
 152-90584-026
 152-90584-027
 152-90584-028
 152-90584-029
 152-90584-030
 152-90584-031
 152-90584-032
 152-90584-033
 152-90584-034
 152-90584-035
 152-90584-036
 152-90584-037
 152-90584-038
 152-90584-039
 152-90584-040
 152-90584-041
 152-90584-042
 152-90584-043
 152-90584-044
 152-90584-045
 152-90584-046
 152-90584-047
 152-90584-048
 152-90584-049
 152-90584-050
 152-90584-051
 152-90584-052
 152-90584-053
 152-90584-054
 152-90584-055
 152-90584-056
 152-90584-057
 152-90584-058
 152-90584-059
 152-90584-060
 152-90584-061
 152-90584-062
 152-90584-063
 152-90584-064
 152-90584-065
 152-90584-066
 152-90584-067
 152-90584-068
 152-90584-069
 152-90584-070
 152-90584-071
 152-90584-072
 152-90584-073
 152-90584-074
 152-90584-075
 152-90584-076
 152-90584-077
 152-90584-078
 152-90584-079
 152-90584-080
 152-90584-081
 152-90584-082
 152-90584-083
 152-90584-084
 152-90584-085
 152-90584-086
 152-90584-087
 152-90584-088
 152-90584-089
 152-90584-090
 152-90584-091
 152-90584-092
 152-90584-093
 152-90584-094
 152-90584-095
 152-90584-096
 152-90584-097
 152-90584-098
 152-90584-099
 152-90584-100
 152-90584-101
 152-90584-102
 152-90584-103
 152-90584-104
 152-90584-105
 152-90584-106
 152-90584-107
 152-90584-108
 152-90584-109
 152-90584-110
 152-90584-111
 152-90584-112
 152-90584-113
 152-90584-114
 152-90584-115
 152-90584-116
 152-90584-117
 152-90584-118
 152-90584-119
 152-90584-120
 152-90584-121
 152-90584-122
 152-90584-123
 152-90584-124
 152-90584-125
 152-90584-126
 152-90584-127
 152-90584-128
 152-90584-129
 152-90584-130
 152-90584-131
 152-90584-132
 152-90584-133
 152-90584-134
 152-90584-135
 152-90584-136
 152-90584-137
 152-90584-138
 152-90584-139
 152-90584-140
 152-90584-141
 152-90584-142
 152-90584-143
 152-90584-144
 152-90584-145
 152-90584-146
 152-90584-147
 152-90584-148
 152-90584-149
 152-90584-150
 152-90584-151
 152-90584-152
 152-90584-153
 152-90584-154
 152-90584-155
 152-90584-156
 152-90584-157
 152-90584-158
 152-90584-159
 152-90584-160
 152-90584-161
 152-90584-162
 152-90584-163
 152-90584-164
 152-90584-165
 152-90584-166
 152-90584-167
 152-90584-168
 152-90584-169
 152-90584-170
 152-90584-171
 152-90584-172
 152-90584-173
 152-90584-174
 152-90584-175
 152-90584-176
 152-90584-177
 152-90584-178
 152-90584-179
 152-90584-180
 152-90584-181
 152-90584-182
 152-90584-183
 152-90584-184
 152-90584-185
 152-90584-186
 152-90584-187
 152-90584-188
 152-90584-189
 152-90584-190
 152-90584-191
 152-90584-192
 152-90584-193
 152-90584-194
 152-90584-195
 152-90584-196
 152-90584-197
 152-90584-198
 152-90584-199
 152-90584-200
 152-90584-201
 152-90584-202
 152-90584-203
 152-90584-204
 152-90584-205
 152-90584-206
 152-90584-207
 152-90584-208
 152-90584-209
 152-90584-210
 152-90584-211
 152-90584-212
 152-90584-213
 152-90584-214
 152-90584-215
 152-90584-216
 152-90584-217
 152-90584-218
 152-90584-219
 152-90584-220
 152-90584-221
 152-90584-222
 152-90584-223
 152-90584-224
 152-90584-225
 152-90584-226
 152-90584-227
 152-90584-228
 152-90584-229
 152-90584-230
 152-90584-231
 152-90584-232
 152-90584-233
 152-90584-234
 152-90584-235
 152-90584-236
 152-90584-237
 152-90584-238
 152-90584-239
 152-90584-240
 152-90584-241
 152-90584-242
 152-90584-243
 152-90584-244
 152-90584-245
 152-90584-246
 152-90584-247
 152-90584-248
 152-90584-249
 152-90584-250
 152-90584-251
 152-90584-252
 152-90584-253
 152-90584-254
 152-90584-255
 152-90584-256
 152-90584-257
 152-90584-258
 152-90584-259
 152-90584-260
 152-90584-261
 152-90584-262
 152-90584-263
 152-90584-264
 152-90584-265
 152-90584-266
 152-90584-267
 152-90584-268
 152-90584-269
 152-90584-270
 152-90584-271
 152-90584-272
 152-90584-273
 152-90584-274
 152-90584-275
 152-90584-276
 152-90584-277
 152-90584-278
 152-90584-279
 152-90584-280
 152-90584-281
 152-90584-282
 152-90584-283
 152-90584-284
 152-90584-285
 152-90584-286
 152-90584-287
 152-90584-288
 152-90584-289
 152-90584-290
 152-90584-291
 152-90584-292
 152-90584-293
 152-90584-294
 152-90584-295
 152-90584-296
 152-90584-297
 152-90584-298
 152-90584-299
 152-90584-300
 152-90584-301
 152-90584-302
 152-90584-303
 152-90584-304
 152-90584-305
 152-90584-306
 152-90584-307
 152-90584-308
 152-90584-309
 152-90584-310
 152-90584-311
 152-90584-312
 152-90584-313
 152-90584-314
 152-90584-315
 152-90584-316
 152-90584-317
 152-90584-318
 152-90584-319
 152-90584-320
 152-90584-321
 152-90584-322
 152-90584-323
 152-90584-324
 152-90584-325
 152-90584-326
 152-90584-327
 152-90584-328
 152-90584-329
 152-90584-330
 152-90584-331
 152-90584-332
 152-90584-333
 152-90584-334
 152-90584-335
 152-90584-336
 152-90584-337
 152-90584-338
 152-90584-339
 152-90584-340
 152-90584-341
 152-90584-342
 152-90584-343
 152-90584-344
 152-90584-345
 152-90584-346
 152-90584-347
 152-90584-348
 152-90584-349
 152-90584-350
 152-90584-351
 152-90584-352
 152-90584-353
 152-90584-354
 152-90584-355
 152-90584-356
 152-90584-357
 152-90584-358
 152-90584-359
 152-90584-360
 152-90584-361
 152-90584-362
 152-90584-363
 152-90584-364
 152-90584-365
 152-90584-366
 152-90584-367
 152-90584-368
 152-90584-369
 152-90584-370
 152-90584-371
 152-90584-372
 152-90584-373
 152-90584-374
 152-90584-375
 152-90584-376
 152-90584-377
 152-90584-378
 152-90584-379
 152-90584-380
 152-90584-381
 152-90584-382
 152-90584-383
 152-90584-384
 152-90584-385
 152-90584-386
 152-90584-387
 152-90584-388
 152-90584-389
 152-90584-390
 152-90584-391
 152-90584-392
 152-90584-393
 152-90584-394
 152-90584-395
 152-90584-396
 152-90584-397
 152-90584-398
 152-90584-399
 152-90584-400
 152-90584-401
 152-90584-402
 152-90584-403
 152-90584-404
 152-90584-405
 152-90584-406
 152-90584-407
 152-90584-408
 152-90584-409
 152-90584-410
 152-90584-411
 152-90584-412
 152-90584-413
 152-90584-414
 152-90584-415
 152-90584-416
 152-90584-417
 152-90584-418
 152-90584-419
 152-90584-420
 152-90584-421
 152-90584-422
 152-90584-423
 152-90584-424
 152-90584-425
 152-90584-426
 152-90584-427
 152-90584-428
 152-90584-429
 152-90584-430
 152-90584-431
 152-90584-432
 152-90584-433
 152-90584-434
 152-90584-435
 152-90584-436
 152-90584-437
 152-90584-438
 152-90584-439
 152-90584-440
 152-90584-441
 152-90584-442
 152-90584-443
 152-90584-444
 152-90584-445
 152-90584-446
 152-90584-447
 152-90584-448
 152-90584-449
 152-90584-450
 152-90584-451
 152-90584-452
 152-90584-453
 152-90584-454
 152-90584-455
 152-90584-456
 152-90584-457
 152-90584-458
 152-90584-459
 152-90584-460
 152-90584-461
 152-90584-462
 152-90584-463
 152-90584-464
 152-90584-465
 152-90584-466
 152-90584-467
 152-90584-468
 152-90584-469
 152-90584-470
 152-90584-471
 152-90584-472
 152-90584-473
 152-90584-474
 152-90584-475
 152-90584-476
 152-90584-477
 152-90584-478
 152-90584-479
 152-90584-480
 152-90584-481
 152-90584-482
 152-90584-483
 152-90584-484
 152-90584-485
 152-90584-486
 152-90584-487
 152-90584-488
 152-90584-489
 152-90584-490
 152-90584-491
 152-90584-492
 152-90584-493
 152-90584-494
 152-90584-495
 152-90584-496
 152-90584-497
 152-90584-498
 152-90584-499
 152-90584-500

DETAIL A
 SCALE 1/4

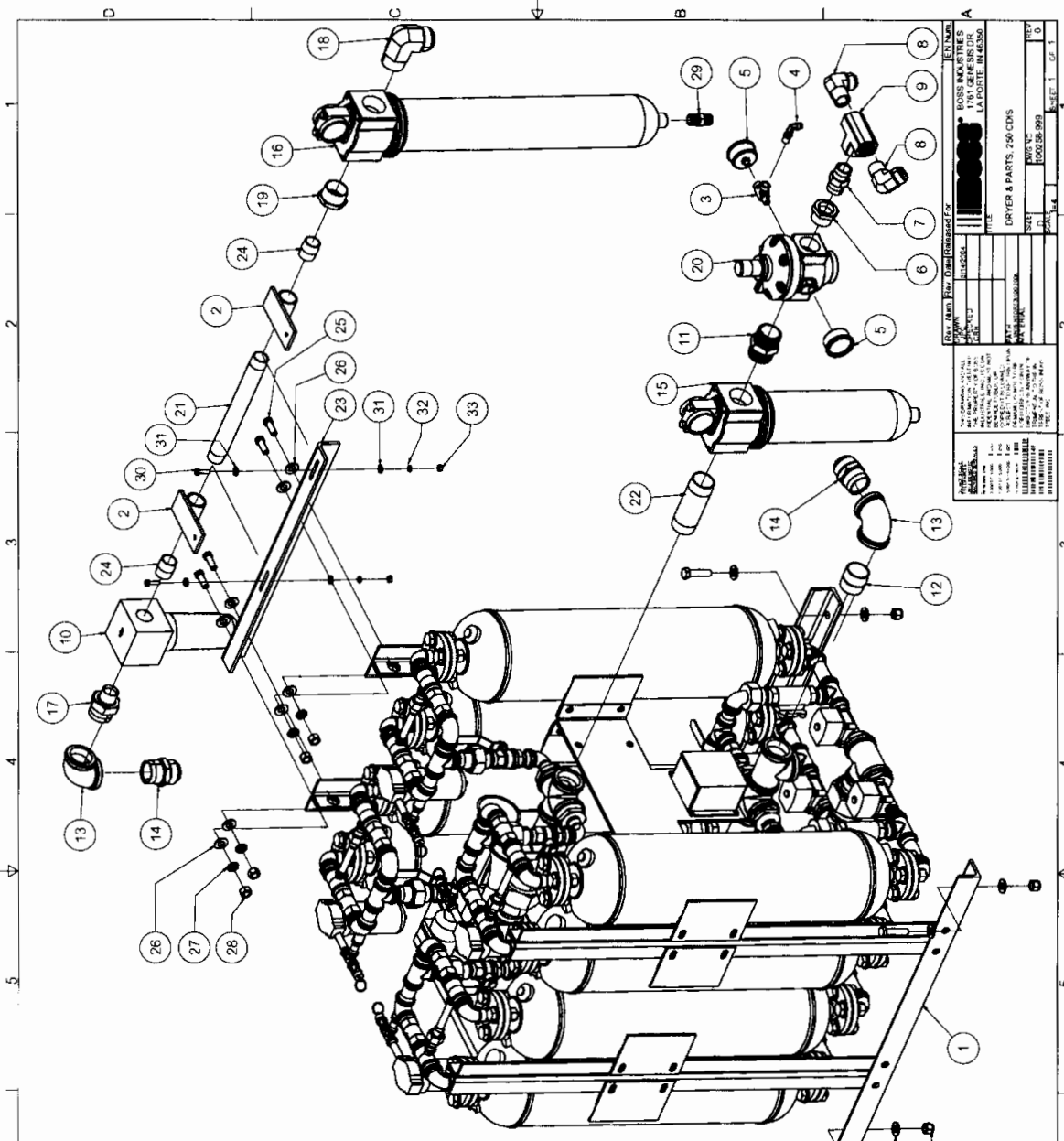
DETAIL B
 SCALE 1/4



ITEM	QTY	PART NUMBER	DESCRIPTION
1	1	158-65921	EXHAUST ELBOW ASSY
2	1	303303	CLAMP, MUFFLER MOUNTING 6 1/2
3	1	158-65875	BRACKET MUFFLER (REV C)
4	2	300067	BAND, SUMP MTG 10
5	2	980100-250	CLAMP, EXHAUST 2 1/2
6	2	300639	CLAMP, SEAL, MUFFLER 3 IN
7	1	980100-400	CLAMP, EXHAUST 4
8	2	120-28144	CLAMP, EXHAUST HALF
9	1	124-65589	MUFFLER, 185-210-250 JD02
10	4	924305-166	NUT, NYLOC GR5 5/16-18
11	2	928105-075	BOLT, HEX GR5 5/16-18 X 3/4
12	2	928105-150	BOLT, HEX GR5 5/16-18 X 1 1/2
13	1	302465	REDUCER, EXHAUST 4" OD TO 3" OD
14	1	302478	REDUCER, EXHAUST TUBE 3" ODK2 1/2" OD
15	1	301999	RESONATOR, 4.0 OD PIPE X 9.0 DIAMETER X 10 LONG
16	1	302423	CAP, RAIN 4" 250 CDIS
17	1	302543	PIPE, EXHAUST STACK 4" X 48"
18	1	303891-400	ELBOW, EXH SHORT RAD 4" OD
19	1	300915-300	ELBOW, EXHAUST 3
20	4	302554-225	SPACER, 3/8 X 2 1/4 BLACK PIPE SHED. 80
21	4	938206-071	WASHER, FLAT GR8 3/8
22	4	937806-094	WASHER, LOC GR8 3/8
23	4	928806-300	BOLT, HEX GR8 3/8-16 X 3
24	1	300923-030	TUBE, FLEX AL EXH 3" X 10'
25	1	126-28145	GASKET, EXHAUST-JD (NOT SHOWN)
26	1	302479	BLANKET, THERMAL 3" ODK36" LONG (NOT SHOWN)
27	1	300639-300	CLAMP, SEAL, MUFFLER 4 IN

BOSS INDUSTRIES
 10000 W. 10th Ave., Suite 100
 Denver, CO 80231-5999
 TEL: 303.751.1000
 FAX: 303.751.1001
 WWW: WWW.BOSSINDUSTRIES.COM

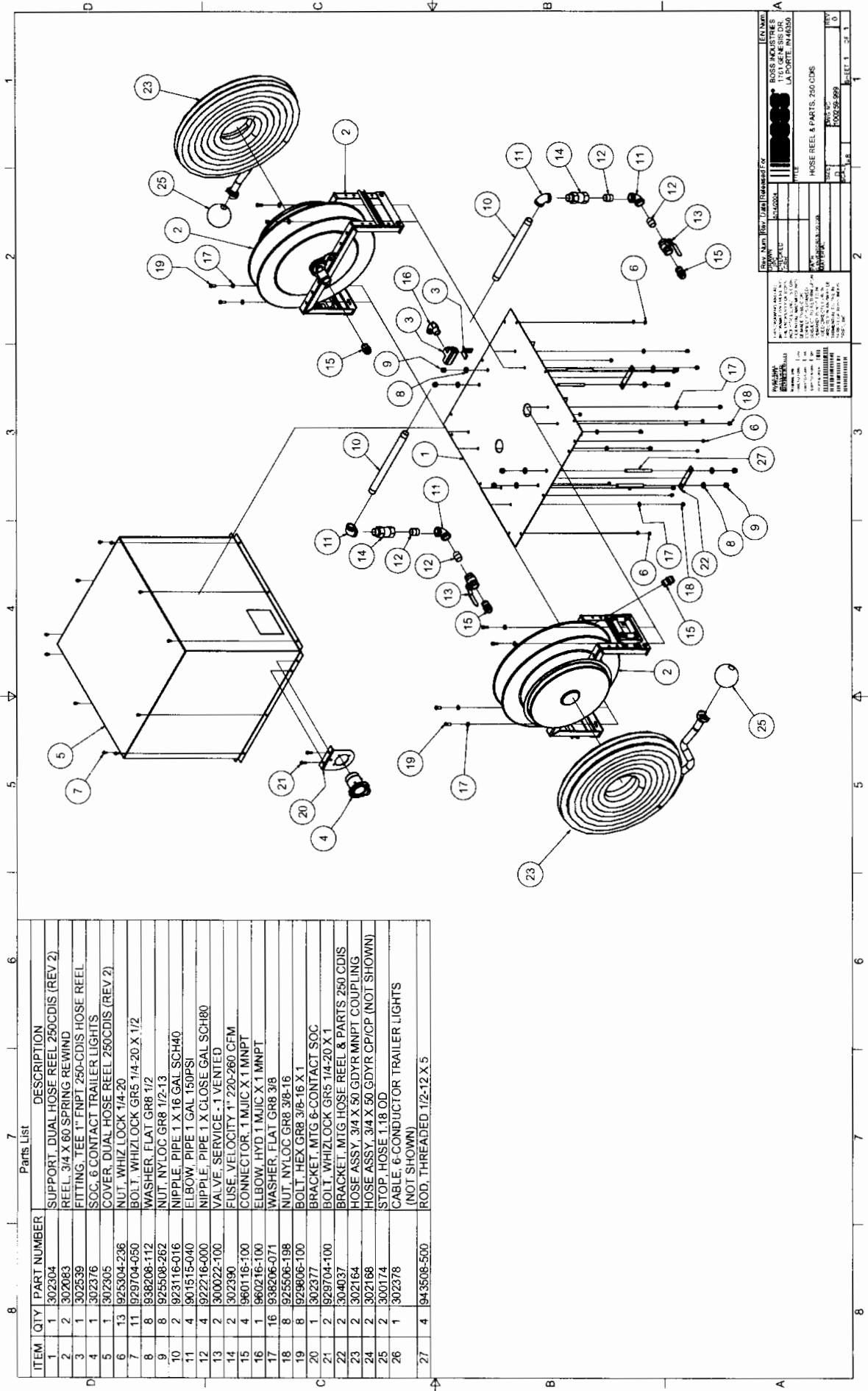
EXHAUST & PARTS, 250 CDIS
 PART NO: 980100-250
 REV: 0
 DATE: 02/03/99
 PAGE: 1 OF 1



ITEM	QTY	PART NUMBER	DESCRIPTION
1	1	302291	DRYER, AIR INTEGRATED, 250MPS
2	2	304019	BRACKET, COUPLING, WATER SEPARATOR TRAP AND COALESCING FILTER
3	1	964804-025	TEE, PIPE 1/4" X 1/4" X 1/4"
4	1	980704-025	ELBOW, 1/4" TUBE SWVLX 1/4" MNPT
5	2	300333	GAUGE, PRESS - 1/4" NPT 0-200 PSI
6	1	907605-040	BUSHING, RED 1/4" X 1 GAL
7	1	960416-100	NIPPLE, HYD HEX 1
8	2	960216-100	ELBOW, HYD 1 MJIC X 1 MNPT
9	1	960616-100	TEE, HYD F X F X F 1 3000PSI
10	1	300387	MOISTURE TRAP, AUTO DRAIN 1
11	1	960424-150	NIPPLE, HYD HEX 1 1/2
12	1	922224-000	NIPPLE, PIPE 1 1/2 X CLOSE GAL SCH80
13	2	901515-060	ELBOW, PIPE 1 1/2 GAL 1500PSI
14	2	960124-150	CONNECTOR, 1 1/2 MJIC X 1 1/2 MNPT
15	1	302293	FILTER, PARTICULATE 250MPS AIR DRYER
16	1	302295	FILTER, COALESCING 250MPS AIR DRYER
17	1	961624-100	NIPPLE, HYD JIC X 1 1/2 X 1
18	1	960224-150	ELBOW, 1 1/2 JIC X 1 1/2 MNPT
19	1	907606-040	BUSHING, RED 1 1/2 X 1 GAL
20	1	302292	REG, 250MPS AIR DRYER
21	1	922116-110	NIPPLE, PIPE 1 X 1 1/2 GAL SCH40
22	1	922124-050	NIPPLE, PIPE 1 1/2 X 5 GAL SCH40
23	1	304009	BRACKET, WATER SEPARATOR TRAP AND COALESCING FILTER
24	2	922216-000	NIPPLE, PIPE 1 X CLOSE GAL SCH80
25	4	929807-125	BOLT, HEX GR8 7/16-14 X 1 1/4
26	16	938208-112	WASHER, FLAT GR8 1/2
27	4	937808-125	WASHER, LOC GR8 1/2
28	4	924908-448	NUT, HEX GR8 1/2-20
29	1	960408-050	NIPPLE, HYD HEX 1/2
30	2	929104-100	BOLT, HEX GR5 1/4-20 X 1
31	4	937204-071	WASHER, FLAT GR2 1/4
32	2	938004-062	WASHER, LOC GR5 1/4
33	2	925204-226	NUT, HEX GR5 1/4-20
34	4	929808-200	BOLT, HEX GR8 1/2-13 X 2
35	4	925508-282	NUT, NYLOC GR8 1/2-13
36	1	302294	DRAIN, 250 MPS AIR DRYER (NOT SHOWN)

Rev. A Item No. 302291
 Part No. 302291
 Title DRYER & PARTS, 250 CDS
 Date 10/1/80
 Drawn By J. L. LAPOINTE
 Checked By J. L. LAPOINTE
 Scale 1:1
 Sheet 1 of 1

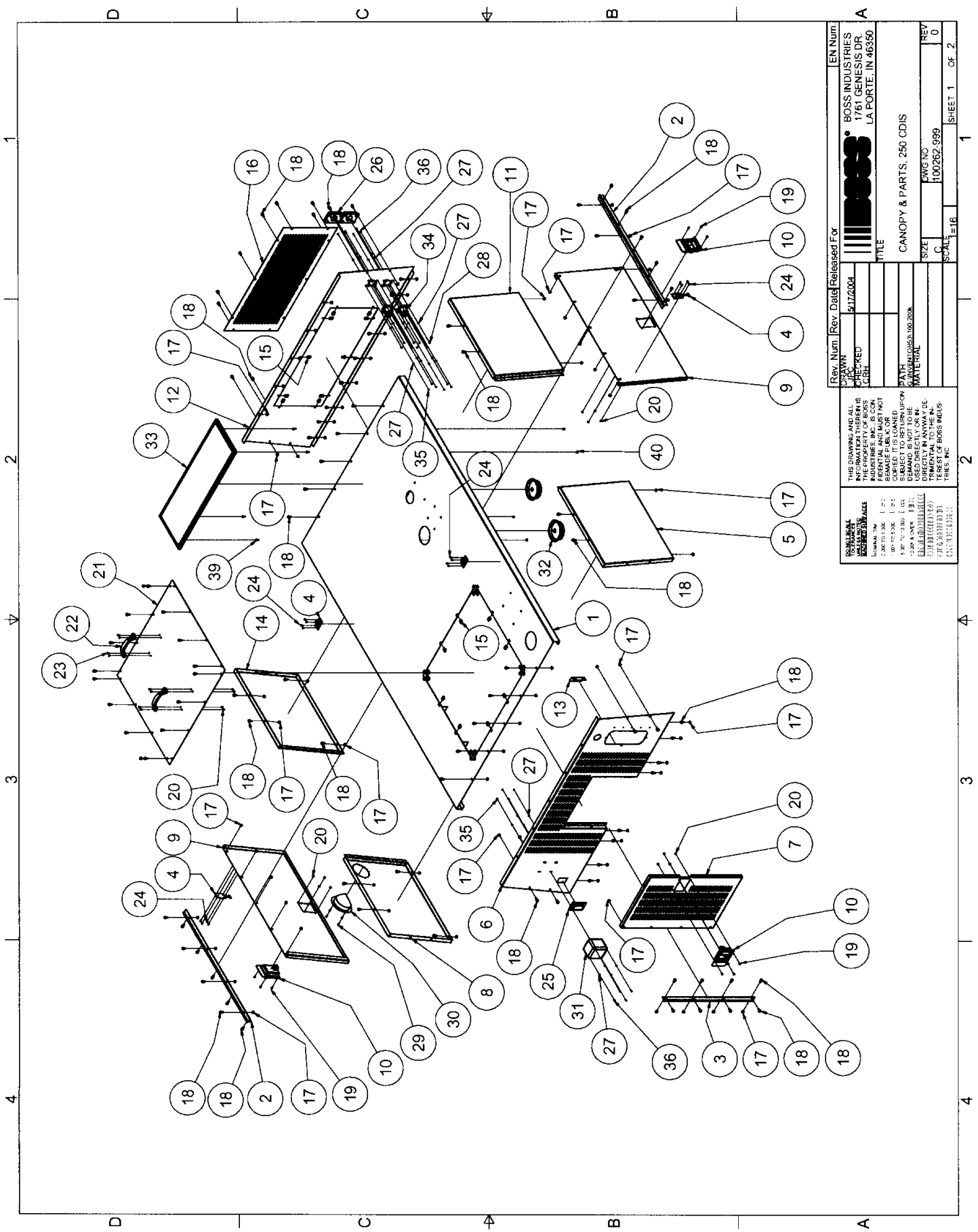
Part No. 302291
 Title DRYER & PARTS, 250 CDS
 Date 10/1/80
 Drawn By J. L. LAPOINTE
 Checked By J. L. LAPOINTE
 Scale 1:1
 Sheet 1 of 1



ITEM	QTY	PART NUMBER	DESCRIPTION
1	1	302304	SUPPORT, DUAL HOSE REEL 250CDIS (REV 2)
2	2	302083	REEL, 3/4 X 60 SPRING REWIND
3	1	302539	FITTING, TEE 1" FNPT 250-CDIS HOSE REEL
4	1	302376	SOC, 6 CONTACT TRAILER LIGHTS
5	1	302305	COVER, DUAL HOSE REEL 250CDIS (REV 2)
6	13	925304-236	NUT, WHIZ LOCK 1/4-20
7	11	929704-050	BOLT, WHIZ LOCK GR5 1/4-20 X 1/2
8	8	938208-112	WASHER, FLAT GR8 1/2
9	8	925508-262	NUT, NYLOC GR8 1/2-13
10	2	923116-016	NIPPLE, PIPE 1 X 16 GAL SCH40
11	4	901515-040	ELBOW, PIPE 1 GAL 150PSI
12	4	922216-000	NIPPLE, PIPE 1 X CLOSE GAL SCH80
13	2	300022-100	VALVE, SERVICE - 1 VENTED
14	2	302390	FUSE, VELOCITY 1" 220-260 CFM
15	4	960116-100	CONNECTOR, 1 MJC X 1 MNPT
16	1	960216-100	ELBOW, HYD 1 MJC X 1 MNPT
17	16	938206-071	WASHER, FLAT GR8 3/8
18	8	925508-198	NUT, NYLOC GR8 3/8-16
19	8	929606-100	BOLT, HEX GR8 3/8-16 X 1
20	1	302377	BRACKET, MTG 6-CONTACT SOC
21	2	929704-100	BOLT, WHIZ LOCK GR5 1/4-20 X 1
22	2	304037	BRACKET, MTG HOSE REEL & PARTS CDIS
23	2	302164	HOSE ASSY, 3/4 X 50 GIDYR MNPT COUPLING
24	2	302168	HOSE ASSY, 3/4 X 50 GIDYR CP/CP (NOT SHOWN)
25	2	300174	STOP, HOSE 1.18 OD
26	1	302378	CABLE, 6-CONDUCTOR TRAILER LIGHTS (NOT SHOWN)
27	4	943508-500	ROD, THREADED 1/2-12 X 5

Rev. Num	Rev. Date	Released For
0001	01/11/00	LA PORTE, IN 46350
0002	02/02/00	LA PORTE, IN 46350
0003	02/02/00	LA PORTE, IN 46350
0004	02/02/00	LA PORTE, IN 46350
0005	02/02/00	LA PORTE, IN 46350
0006	02/02/00	LA PORTE, IN 46350
0007	02/02/00	LA PORTE, IN 46350
0008	02/02/00	LA PORTE, IN 46350
0009	02/02/00	LA PORTE, IN 46350
0010	02/02/00	LA PORTE, IN 46350
0011	02/02/00	LA PORTE, IN 46350
0012	02/02/00	LA PORTE, IN 46350
0013	02/02/00	LA PORTE, IN 46350
0014	02/02/00	LA PORTE, IN 46350
0015	02/02/00	LA PORTE, IN 46350
0016	02/02/00	LA PORTE, IN 46350
0017	02/02/00	LA PORTE, IN 46350
0018	02/02/00	LA PORTE, IN 46350
0019	02/02/00	LA PORTE, IN 46350
0020	02/02/00	LA PORTE, IN 46350
0021	02/02/00	LA PORTE, IN 46350
0022	02/02/00	LA PORTE, IN 46350
0023	02/02/00	LA PORTE, IN 46350
0024	02/02/00	LA PORTE, IN 46350
0025	02/02/00	LA PORTE, IN 46350
0026	02/02/00	LA PORTE, IN 46350
0027	02/02/00	LA PORTE, IN 46350
0028	02/02/00	LA PORTE, IN 46350
0029	02/02/00	LA PORTE, IN 46350
0030	02/02/00	LA PORTE, IN 46350
0031	02/02/00	LA PORTE, IN 46350
0032	02/02/00	LA PORTE, IN 46350
0033	02/02/00	LA PORTE, IN 46350
0034	02/02/00	LA PORTE, IN 46350
0035	02/02/00	LA PORTE, IN 46350
0036	02/02/00	LA PORTE, IN 46350
0037	02/02/00	LA PORTE, IN 46350
0038	02/02/00	LA PORTE, IN 46350
0039	02/02/00	LA PORTE, IN 46350
0040	02/02/00	LA PORTE, IN 46350
0041	02/02/00	LA PORTE, IN 46350
0042	02/02/00	LA PORTE, IN 46350
0043	02/02/00	LA PORTE, IN 46350
0044	02/02/00	LA PORTE, IN 46350
0045	02/02/00	LA PORTE, IN 46350
0046	02/02/00	LA PORTE, IN 46350
0047	02/02/00	LA PORTE, IN 46350
0048	02/02/00	LA PORTE, IN 46350
0049	02/02/00	LA PORTE, IN 46350
0050	02/02/00	LA PORTE, IN 46350
0051	02/02/00	LA PORTE, IN 46350
0052	02/02/00	LA PORTE, IN 46350
0053	02/02/00	LA PORTE, IN 46350
0054	02/02/00	LA PORTE, IN 46350
0055	02/02/00	LA PORTE, IN 46350
0056	02/02/00	LA PORTE, IN 46350
0057	02/02/00	LA PORTE, IN 46350
0058	02/02/00	LA PORTE, IN 46350
0059	02/02/00	LA PORTE, IN 46350
0060	02/02/00	LA PORTE, IN 46350
0061	02/02/00	LA PORTE, IN 46350
0062	02/02/00	LA PORTE, IN 46350
0063	02/02/00	LA PORTE, IN 46350
0064	02/02/00	LA PORTE, IN 46350
0065	02/02/00	LA PORTE, IN 46350
0066	02/02/00	LA PORTE, IN 46350
0067	02/02/00	LA PORTE, IN 46350
0068	02/02/00	LA PORTE, IN 46350
0069	02/02/00	LA PORTE, IN 46350
0070	02/02/00	LA PORTE, IN 46350
0071	02/02/00	LA PORTE, IN 46350
0072	02/02/00	LA PORTE, IN 46350
0073	02/02/00	LA PORTE, IN 46350
0074	02/02/00	LA PORTE, IN 46350
0075	02/02/00	LA PORTE, IN 46350
0076	02/02/00	LA PORTE, IN 46350
0077	02/02/00	LA PORTE, IN 46350
0078	02/02/00	LA PORTE, IN 46350
0079	02/02/00	LA PORTE, IN 46350
0080	02/02/00	LA PORTE, IN 46350
0081	02/02/00	LA PORTE, IN 46350
0082	02/02/00	LA PORTE, IN 46350
0083	02/02/00	LA PORTE, IN 46350
0084	02/02/00	LA PORTE, IN 46350
0085	02/02/00	LA PORTE, IN 46350
0086	02/02/00	LA PORTE, IN 46350
0087	02/02/00	LA PORTE, IN 46350
0088	02/02/00	LA PORTE, IN 46350
0089	02/02/00	LA PORTE, IN 46350
0090	02/02/00	LA PORTE, IN 46350
0091	02/02/00	LA PORTE, IN 46350
0092	02/02/00	LA PORTE, IN 46350
0093	02/02/00	LA PORTE, IN 46350
0094	02/02/00	LA PORTE, IN 46350
0095	02/02/00	LA PORTE, IN 46350
0096	02/02/00	LA PORTE, IN 46350
0097	02/02/00	LA PORTE, IN 46350
0098	02/02/00	LA PORTE, IN 46350
0099	02/02/00	LA PORTE, IN 46350
0100	02/02/00	LA PORTE, IN 46350

Part Name	HOSE REEL & PARTS, 250 CDIS
Part No.	943508-500
Rev.	0
Drawn	0
Checked	0
Released	0
By	0
Date	0
Scale	0
Sheet	1 of 1



Rev. Num	Rev. Date	Released For	EN Num
0	5/17/2004	BOSS INDUSTRIES	
1		1761 GENESIS DR.	
2		LA PORTE, IN 46350	
TITLE			
CANOPY & PARTS, 250 CDIS			
DRAWING NO.			
100262-999			
SCALE			1=16
SHEET 1			OF 2

THIS DRAWING AND ALL INFORMATION THEREIN IS THE PROPERTY OF BOSS INDUSTRIES, INC. IS CONFIDENTIAL AND MUST NOT BE REPRODUCED OR COPIED WITHOUT THE WRITTEN PERMISSION OF BOSS INDUSTRIES, INC.	SUBJECT TO RETURN UPON REQUEST TO: BOSS INDUSTRIES, INC. 1761 GENESIS DR. LA PORTE, IN 46350
BOSS INDUSTRIES, INC. 1761 GENESIS DR. LA PORTE, IN 46350	BOSS INDUSTRIES, INC. 1761 GENESIS DR. LA PORTE, IN 46350

4				3				2				1			
Parts List				Parts List				Parts List				Parts List			
ITEM	QTY	PART NUMBER	DESCRIPTION	ITEM	QTY	PART NUMBER	DESCRIPTION	ITEM	QTY	PART NUMBER	DESCRIPTION	ITEM	QTY	PART NUMBER	DESCRIPTION
1	1	302300-1	CANOPY, COVER (REV 1)	38	1	302342	RCPTCL, FEMALE 30-AMP 125V 3-WIRE TWIST (NOT SHOWN)	39	4	929104-075	BOLT, HEX GR5 1/4-20 X 3/4	40	4	924304-145	NUT, NYLOC GR5 1/4-20
2	2	302300-13	CANOPY, SIDE DOOR HINGE												
3	1	302300-14	CANOPY, REAR DOOR HINGE (REV 1)												
4	2	150-90195	KEEPER, HOOK ASSY DOOR LATCH 8-106												
5	1	302300-4	CANOPY, FRONT LEFT SIDE												
6	1	302300-5	CANOPY, REAR (REV 4)												
7	1	302300-6	CANOPY, REAR DOOR (REV 1)												
8	1	302300-7	CANOPY, REAR LEFT SIDE (REV 2)												
9	2	302300-9	CANOPY, RIGHT SIDE DOOR (REV 2)												
10	3	302300-10	LATCH, DOOR 250-CDIS CANOPY												
11	1	302300-15	CANOPY, FRONT RIGHT SIDE PANEL (REV 1)												
12	1	302300-2	CANOPY, FRONT (REV 1)												
13	1	302300-12	CANOPY, REAR DOOR STRIKER												
14	1	302300-8	CANOPY, REAR RIGHT SIDE												
15	26	961505-140	NUT, TINNEMAN 5/16-18												
16	1	302300-3	CANOPY, FRONT COOLER COVER												
17	77	925305-283	NUT, WHIZ LOCK 5/16-18												
18	103	929705-075	BOLT, WHIZLOCK GR5 5/16-18 X 3/4												
19	12	983802-050	BOLT, BTNHD GR5 10-24 X 1/2												
20	20	924302-130	NUT, NYLOC GR5 #10-24												
21	1	302300-20	CANOPY, DRYER COVER												
22	2	302440	HANDLE, GRAB 7" BLACK DIE CAST												
23	8	931602-050	SCREW, MACH RD HD #10-24 X 1/2												
24	16	943103-025	RIVET, POP 3/16 X 1/2 ALUMINUM												
25	1	302223	COVER, RCPTCL 1GNG WP 120V15AMP												
26	2	302343	COVER, RCPTCL PCV												
27	28	937201-045	WASHER, FLAT GR2 #6												
28	8	973700-063	NUT, HEX NYLOC GR2 #6-32												
29	4	943103-025	RIVET, 3/16 X GRPRNG 1/4 TO 1/8												
30	1	302538	BEZEL, FILL NECK 6 1/4 OD												
31	1	302344	COVER, CLEAR PL PCV												
32	2	302350	LAMP, DOME W SWITCH 250 CDIS												
33	1	302347	CHARGER, SOLAR BATT 12V 15W												
34	2	302341	RCPTCL, MALE 30-AMP 125V 3-WIRE TWIST												
35	10	925200-114	NUT, HEX GR5 #6-32												
36	10	929102-050	BOLT, HEX GR5 #6-32 X 1/2												
37	1/8 R	301380	INSUL, 1" POLY 54" X 50 FT LONG W/ ADHESIVE BACKING (NOT SHOWN)												
		OLL													

Rev. Num. | Rev. Date | Released For

EN Num.

BOSS INDUSTRIES
1761 GENESIS DR.
LA PORTE, IN 46350

BOSS

TITLE
CANOPY & PARTS, 250 CDIS

DATE
5/17/2004

DESIGNED BY
GJH

CHECKED BY
GJH

SCALE
100% (1:1)

SIZE
100262-999

REV
0

SHEET 2 OF 2

THIS DRAWING AND ALL INFORMATION THEREIN IS THE PROPERTY OF BOSS INDUSTRIES, INC. IT IS CONFIDENTIAL AND MUST NOT BE REPRODUCED OR TRANSMITTED IN ANY MANNER WITHOUT THE WRITTEN PERMISSION OF BOSS INDUSTRIES, INC.

ALL RIGHTS RESERVED

DATE: 5/17/2004

BY: GJH

CHKD: GJH

REV: 0

SCALE: 100% (1:1)

SIZE: 100262-999

REV: 0

SHEET 2 OF 2

